



Rice Emergency Medical Services

Statistics Report

Jan 1, 2005 – Dec 31, 2005

Table Of Contents

General Overview -----	2
Types of Calls -----	3
Call Location -----	4
Patient Disposition -----	6
HFD Statistics -----	6
Patient Affiliation -----	7
Destination Hospitals -----	7
Call Volume by Month -----	8
Response Time -----	9
Alcohol Intoxication Call Statistics -----	10

Overview

- Total number of calls: **510**
- Total patients treated: **521**
- Total patients to hospital: **209** (40% of total pts.)
- Total patients transferred to HFD: **65**
- Most common patient affiliation: **Undergraduate**
- Average response time: **3.8 mins.**
(Time of dispatch to time of pt. contact)
- Cardiac arrests responded to: **3**

Most common calls:

1. Fracture/Dislocation (Ankle most common)
2. Alcohol Intoxication
3. Hemorrhage/Laceration
4. General Illness
5. Fall

Most common call locations:

1. Autry Court
2. Lovett College
3. Football Stadium
4. Martel College
5. Hanszen College / IM & Club Sports Fields / Police Annex
(3-way tie)

Types of Calls

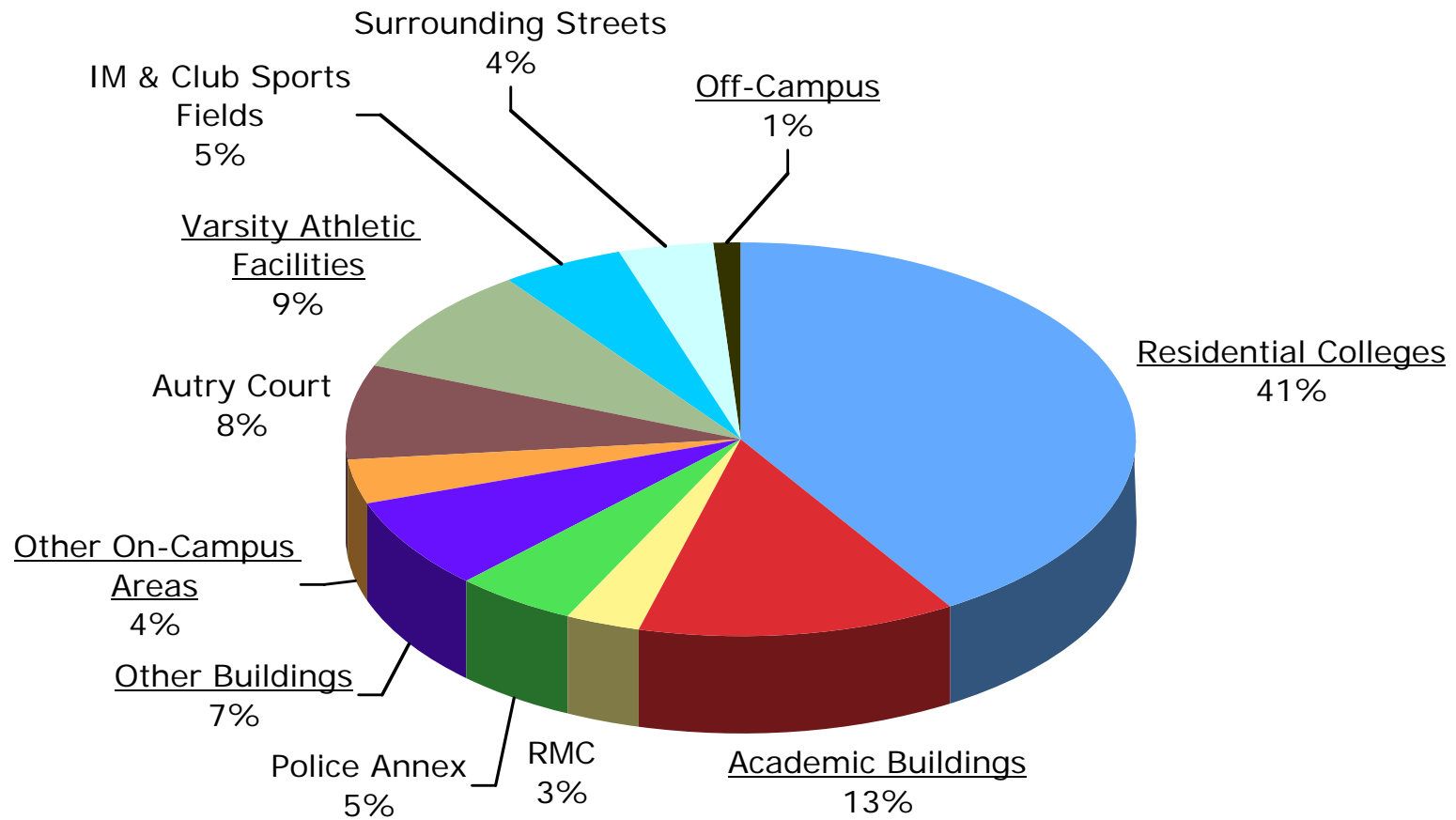
Nature of Call	#	%
Fracture/Dislocation	106	20.3%
Alcohol Intoxication	85	16.3%
Hemorrhage/Laceration	75	14.4%
General Illness	43	8.3%
Fall	25	4.8%
Heat Related	23	4.4%
Allergic Reaction	17	3.3%
Cardiac Related	16	3.1%
Head Injury	13	2.5%
Burns	12	2.3%
Abdominal Pain	12	2.3%
MVC	12	2.3%
Eye Injury	11	2.1%
Difficulty Breathing	9	1.7%
Syncope	8	1.5%
Animal Attack	5	1.0%
Dizziness	5	1.0%

Nature of Call	#	%
Neck/Back Injury	4	>1%
Drug Overdose	4	>1%
Seizure	4	>1%
Cardiac Arrest	3	>1%
Diabetic Related	3	>1%
Chemical Exposure	3	>1%
OB/Gyn	3	>1%
Other Blunt Trauma	3	>1%
Auto vs. Bicycle	2	>1%
Unconscious Person	2	>1%
Toothache	2	>1%
CVA/Stroke	1	>1%
Ear Pain	1	>1%
Psychological	1	>1%
No Injury/No pt. Contact	5	1.0%
Other	3	>1%

Ankle	28
Knee	19
Shoulder	10
Finger	9
Nose	8
Wrist	7
Foot	6
Hand	6
Elbow	3
Toe	3
Arm	2
Leg	1
Other	4

Further Breakdown of Fracture/Dislocations
(# of pts. treated)

Call Locations



Underlined items have further data on next page.

Further Breakdown of Underlined Call Location Categories

Residential Colleges (41% of total)

Lovett	35	6.9%
Martel	30	5.9%
Hanszen	27	5.3%
Wiess	24	4.7%
Will Rice	24	4.7%
Brown	22	4.3%
Baker	17	3.3%
Jones	15	2.9%
Sid Richardson	15	2.9%

Academic Buildings (13% of total)

Anderson Hall	9	1.8%
Hermann Brown	7	1.4%
Space Science Building	7	1.4%
Abercrombie Lab	6	1.2%
Duncan Hall	6	1.2%
Geology Building	6	1.2%
Dell Butcher Hall	5	1.0%
George R. Brown	5	1.0%
Mudd Lab	4	1.0%
Shepherd School	4	1.0%
Herzstein Hall	2	>1%
Humanities Building	2	>1%
Mechanical Engineering Lab	2	>1%
Herring Hall	1	>1%
Ryon Lab	1	>1%

- *Column 1 – Location*
- *Column 2 - # of calls in 2005*
- *Column 3 - % of total 2005 calls*

Varsity Athletic Facilities (9% of total)

Football Stadium	33	6.5%
Reckling Park	7	1.4%
Track/Soccer Stadium	6	1.2%

Other Buildings (7% of total)

F&E	6	1.2%
Lovett Hall	6	1.2%
Parking Garage	4	1.0%
Hicks Kitchen	3	1.0%
Jones School	3	1.0%
Cohen House	2	>1%
Greenbriar Building	2	>1%
Fondren Library	2	>1%
Hamman Hall	2	>1%
H&D	2	>1%
North Servedy	2	>1%
Baker Institute	1	>1%
South Servedy	1	>1%
Rice Media Center	1	>1%
Valhalla	1	>1%

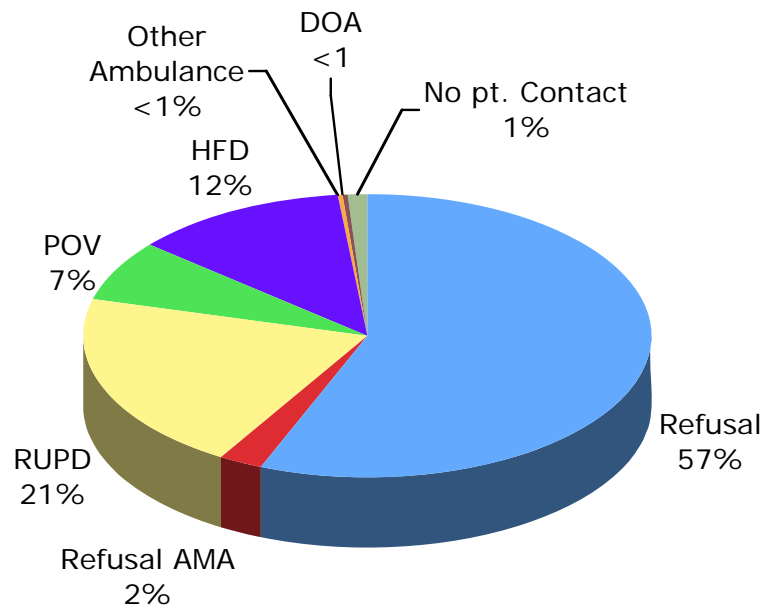
Other On-Campus Areas (4% of total)

Beer Bike Track	6	1.2%
On-Campus Roads	5	1.0%
Parking Lots	3	1.0%
Engineering Quad	2	>1%
Old Wiess Field	2	>1%

Off-Campus (1% of total)

Grad Apartments	4	1.0%
Assist RUPD (MVC's)	2	>1%

Patient Disposition



	# Of pts.
Refusal	292
Refusal AMA	13
RUPD	107
POV	36
HFD	65
Other Ambulance	1
DOA	1
No pt. Contact	6

HFD Statistics

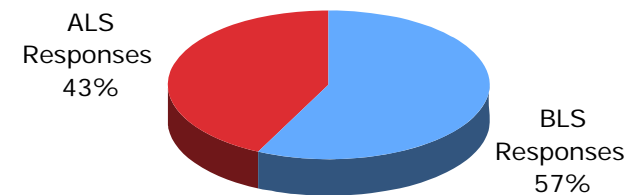
Total Responses: 70
 Total Patients from REMS: 65
 Engine Responses: 9

Unit	# Of Responses
A-33	26
A-16	15
A-516	12
Other	12

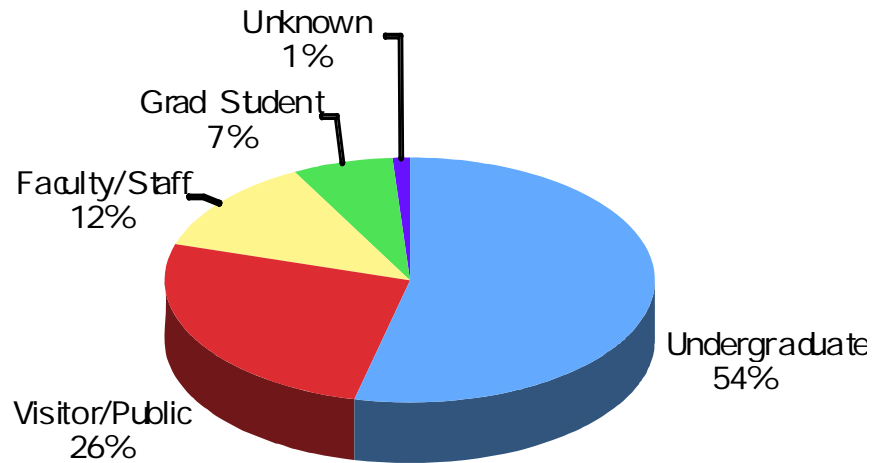
BLS Units

Unit	# Of Responses
SQ-33	15
Other	13
Supervisor	2

ALS Units

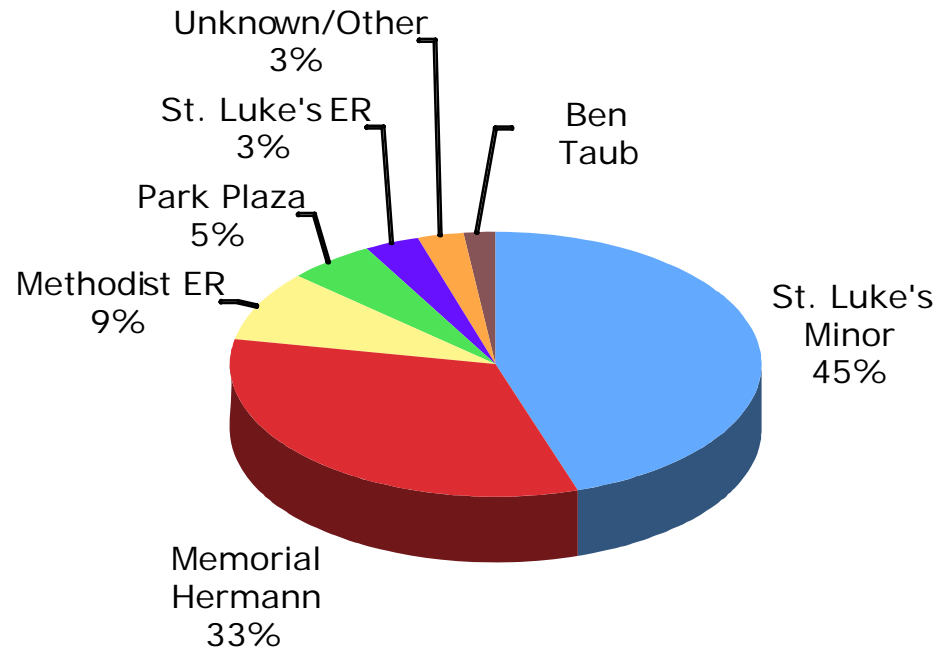


Patient Affiliation



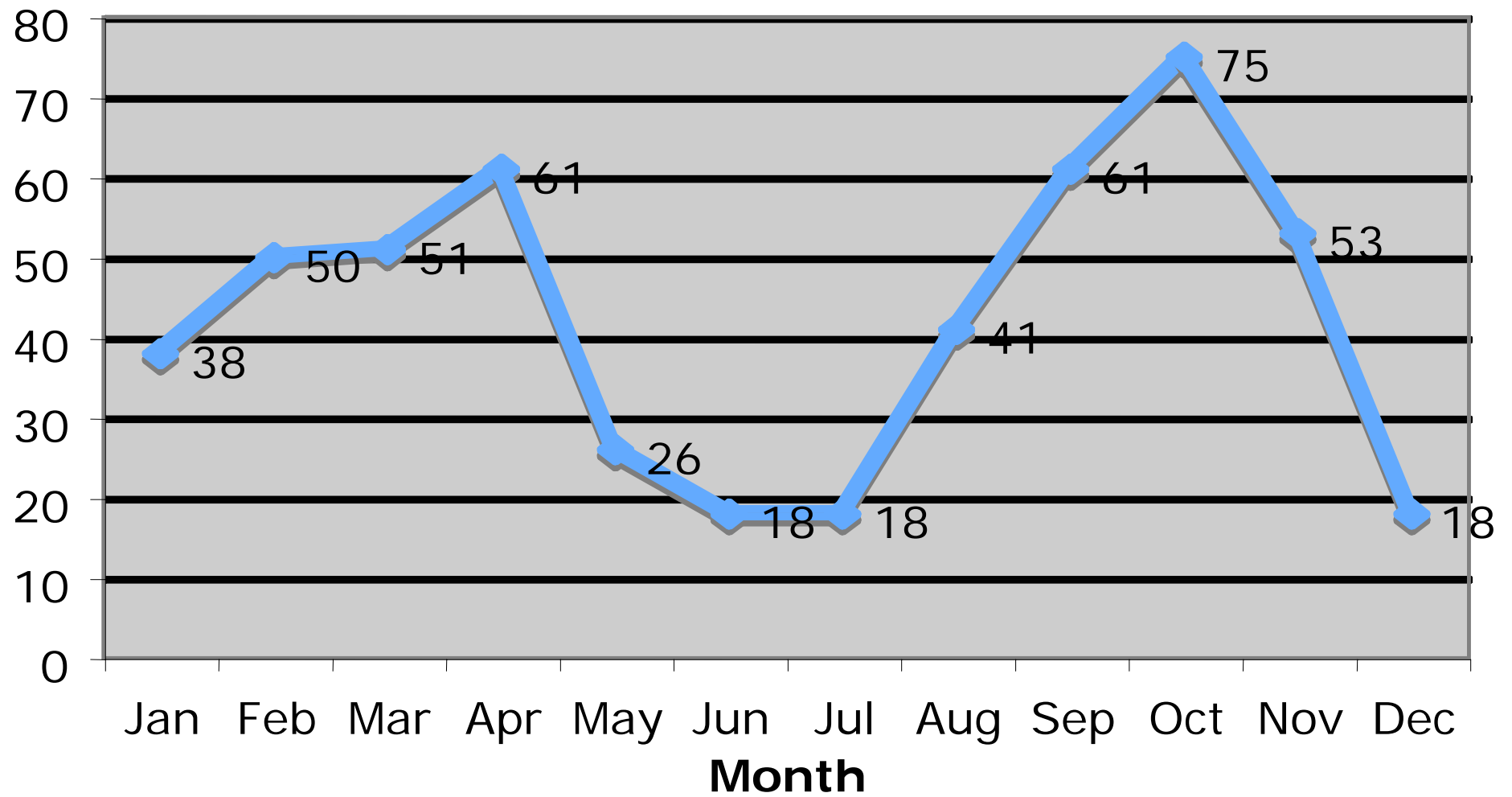
	# Of Patients
Undergraduate	279
Visitor/Public	136
Faculty/Staff	65
Grad Student	35
Unknown	6

Destination Hospitals



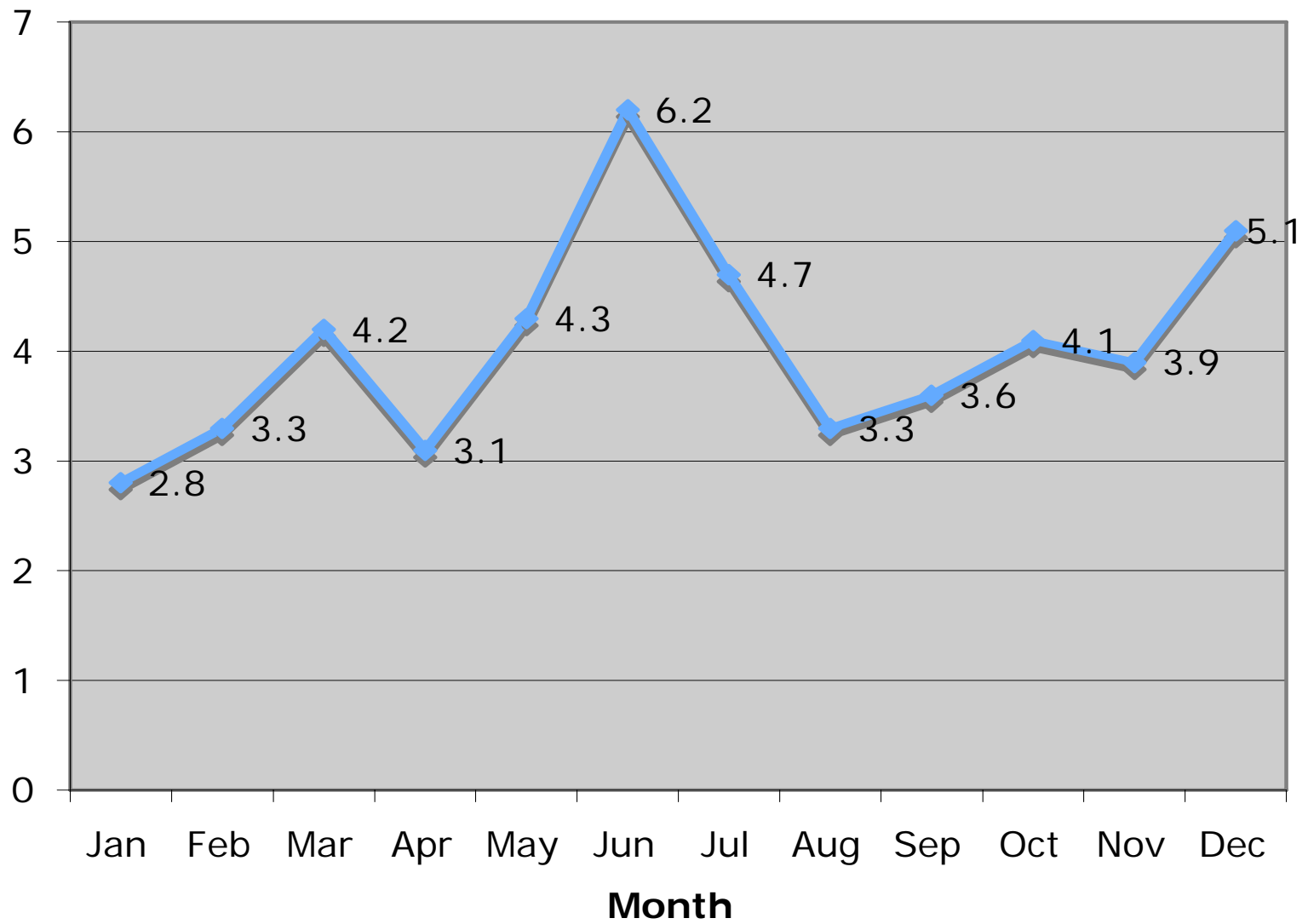
	# Of Patients
St. Luke's Minor	94
Memorial Hermann	69
Methodist ER	18
Park Plaza	11
St. Luke's ER	7
Unknown/Other	6
Ben Taub	4

Call Volume by Month



- April – Beer Bike
- October - NOD

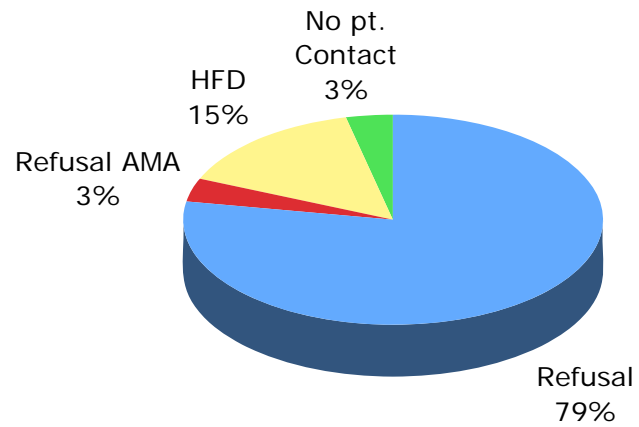
Response Time



➤ *Overall Average: 3.8 minutes*

Alcohol Intoxication Calls

Disposition



	# Of Patients
Refusal	67
Refusal AMA	3
HFD	13
No pt. Contact	3

Other Information

- Repeat patients: **8**
- Previous transports, repeat callers: **2**
- Repeat transports: **0**