

Google Pinyin IME

By Guangping Zhang

I. Google Pinyin IME Features



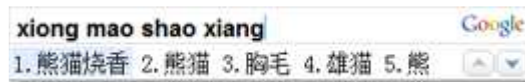
Google Pinyin IME is a powerful Chinese input method. Its input box provides an intelligent input interface which is easy to use. Google Pinyin IME supports continuous typing and can separate consecutive Pinyin letters logically and intelligently. With this input method and some training, students will soon be able to type Chinese characters as fast as English.

Google Pinyin IME has the following features:

- Intelligent sentence creation – Google Pinyin IME can figure out users’ intention and intelligently create sentences based on their intention. No matter whether it is for chatting or big document writing, users will no longer need to use the complicated character-by-character input method. Intelligent phrasing and sentence creation can greatly reduce the time to choose correct words and enhance work efficiency.



- Hot words selection - Google Pinyin IME can use its powerful search engine to collect all hot words and phrases on the Internet and incorporate them into the vocabulary which is updated from time to time. This will allow users to quickly input any popular words.



- Intelligent correction - Google Pinyin IME can automatically correct common input typos. For example, it can change “tign” to “ting.” This feature can help users avoid input interruption due to typos or errors and greatly enhance input speed.



- Smart word sequencing – Google has collected tremendous Internet searching statistics data with which Google Pinyin IME can always sequence input words according to their search frequency. This optimal word sequence will greatly improve input speed.
- One-click search - Google Pinyin IME combines input with search, which allows users to search any default word on Internet. So long as the computer is connected to the Internet, users do not need to launch a browser to make this search. Just click the Google icon on the input box to start the search. It is very convenient.



- User-defined phrases – To meet personalized spelling need, Google Pinyin IME allows users to define an input abbreviations for any frequently used phrase. For example, users can define “addr” for “芝加哥海军码头 (Chicago Navy Pier).” When they type addr, 芝加哥海军码头 will be entered. Users can specify input abbreviations for any frequently used phrases or even sentences to satisfy their special needs.

The following figure shows how to define “cctv” for “中央电视台” (China Central TV Station).



- English input – While in Chinese input mode, Google Pinyin IME allows users to input English words without switching to English input mode. Just press **Shift** to toggle between Chinese and English typing. Another more convenient way to type English in Chinese input mode is to type **v** and then the target word. If the target word is long and difficult, Google Pinyin IME can also help figure out the desired word based on the first few letters entered. This is very convenient for US students who are learning Chinese.



- Pinyin initials - Google Pinyin IME allows users to use z、c、s for zh、ch、sh in abbreviated Pinyin input. For example, users can type s to input 是, 说, or 谁, etc., although the initial for those words is sh. This is very convenient for American students because it is usually difficult for them to distinguish between z、c、s and zh、ch、sh.



- Dynamic input sequence adjustment – Based on the previous input, Google Pinyin IME can adjust Chinese input sequence dynamically. This feature allows users to input their target words more quickly. For example, if users often use 会, Google Pinyin IME can automatically set 会 as the default word for the abbreviated input letter h.
- Traditional Chinese and GBK support – Google Pinyin IME supports both simplified and traditional Chinese character input. Press **Ctrl + Shift + T** to toggle between traditional and simplified Chinese typing. Google Pinyin IME also supports GBK (National Standard Extension) Chinese character database. No matter how rarely used the target word is, Google Pinyin IME can always find it for users.



Google Pinyin IME is free to download and supports Windows 2000, XP, Vista, and IE 6.0 or above.

II. Installing Google Pinyin IME for Windows XP and Vista

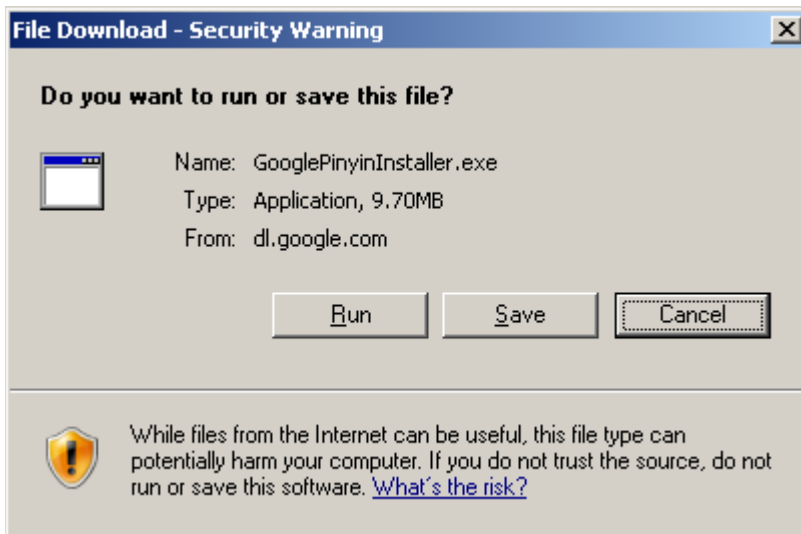
Since this application was developed for users who speak Chinese, all the dialog box texts are written in Chinese. Follow the English instructions in each step to install the application.

To install Google Pinyin IME for Windows XP and Vista:

1. Log in as administrator and download the Google Pinyin IME application from the following website:

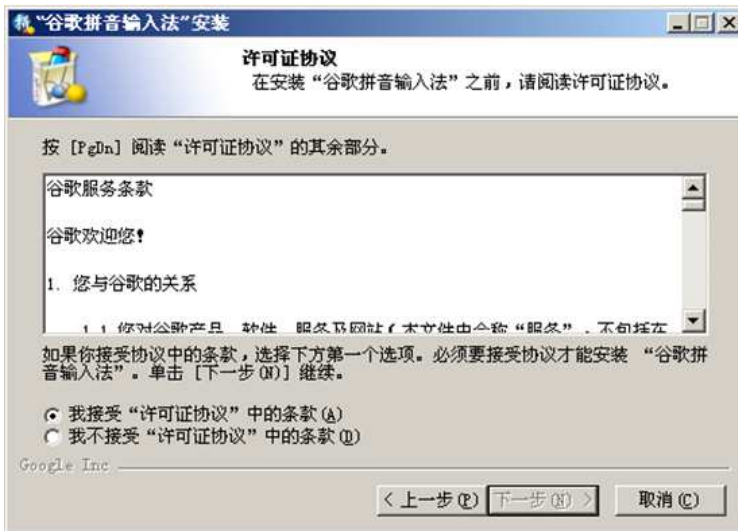
<http://dl.google.com/pinyin/GooglePinyinInstaller.exe>

2. The following dialog box opens. Click **Save** to save the application to your local computer.



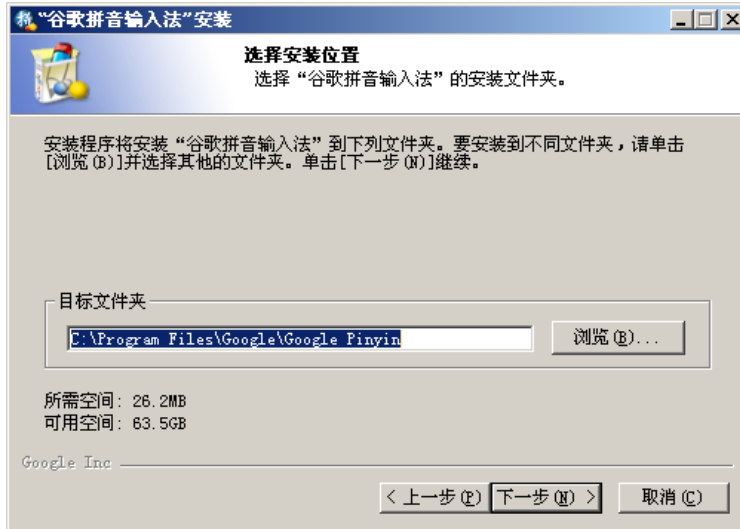
3. From where it is saved, double click **GooglePinyinInstaller.exe** to start the installation.

The **Google Pinyin IME Installation** dialog box opens, as shown below.



4. Click the first radio button to accept the copyright conditions, and then click **下一步 (N) >** to go to the next step.

The **Installation Location** dialog box opens, as shown below.



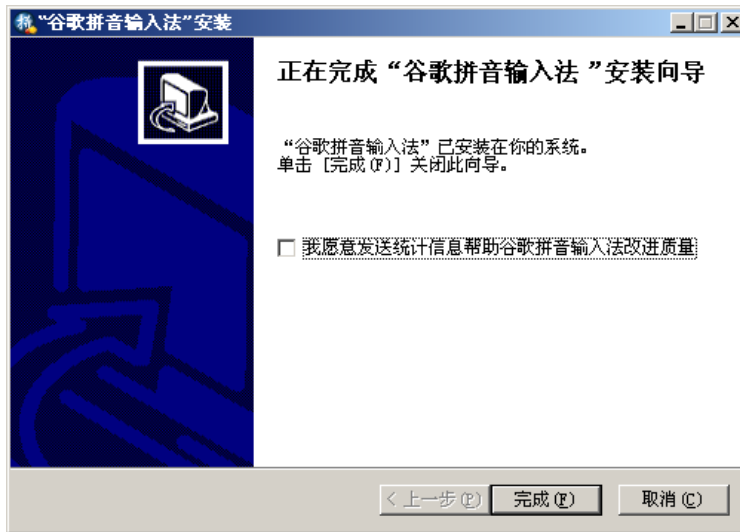
5. Accept the default location and click **下一步(N) >** to go to the next step.

The **Google Search** dialog box opens, as shown below. This dialog asks whether you would like to set Google as the default IE home page and search engine.



6. Uncheck the two checkboxes and then click **安装(I)** to start installation.

The **Installation Completion** dialog box opens, as shown below.



7. Click **完成(F)** to complete installation.

The Google Pinyin IME Installation webpage opens, indicating installation success.



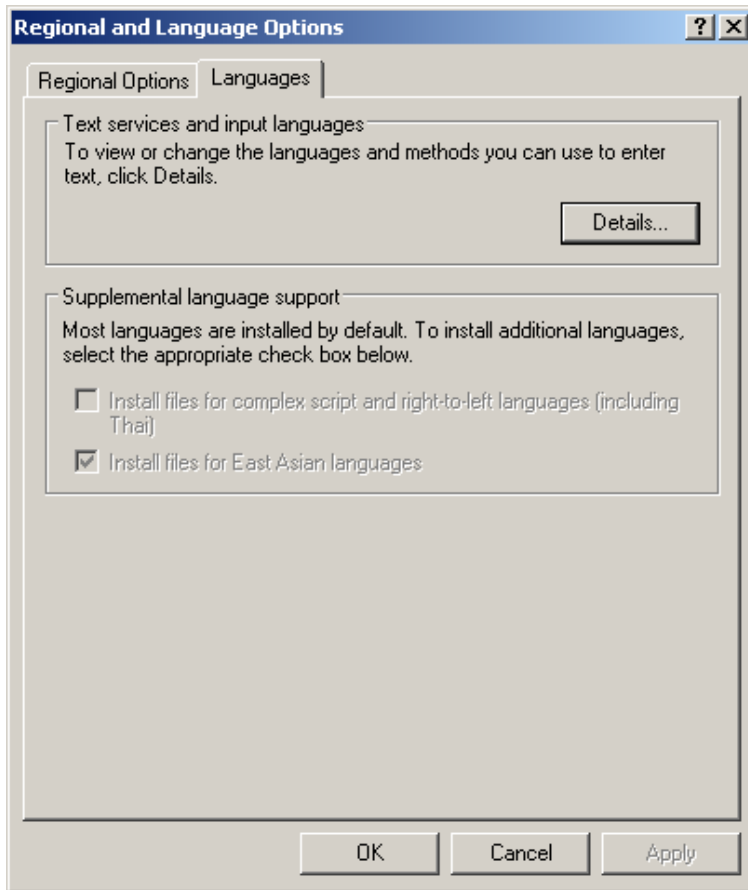
III. Setting up Google Pinyin IME for Windows XP

Depending on the OS, select the appropriate section to set up Google Pinyin IME.

To set up Google Pinyin IME for Windows XP:

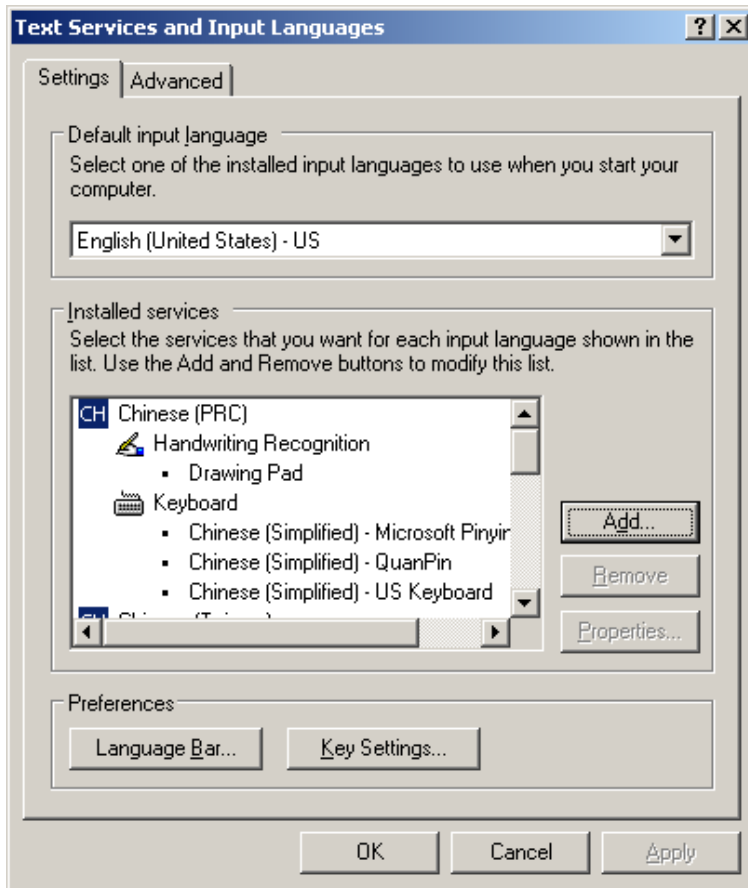
1. Open the Control Panel, double click **Regional and Language Options**, and then click the **Languages** tab.

The **Regional and Language Options** window opens, as shown below.



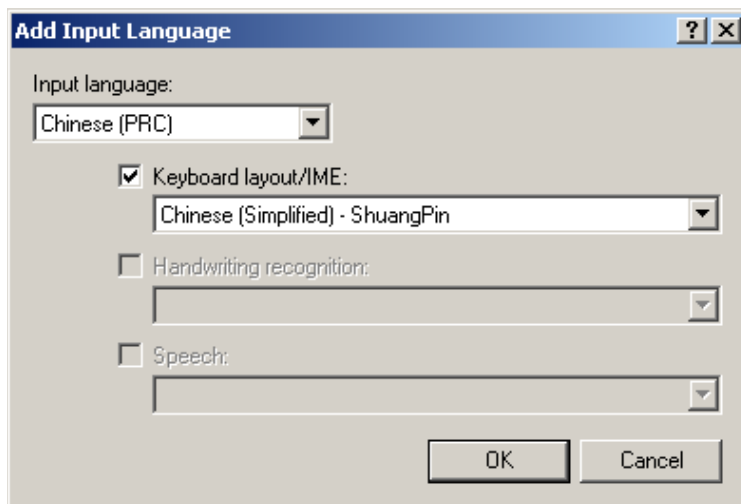
2. If the Chinese language files have not been installed, click the checkbox for **Install files for East Asian languages** to install them from the OS CD.
3. Click **Details**.

The **Text Services and Input Languages** window opens, as shown below.



4. If 中文 (简体) - 谷歌拼音输入法 is not on the **Installed services** list, click **Add**.

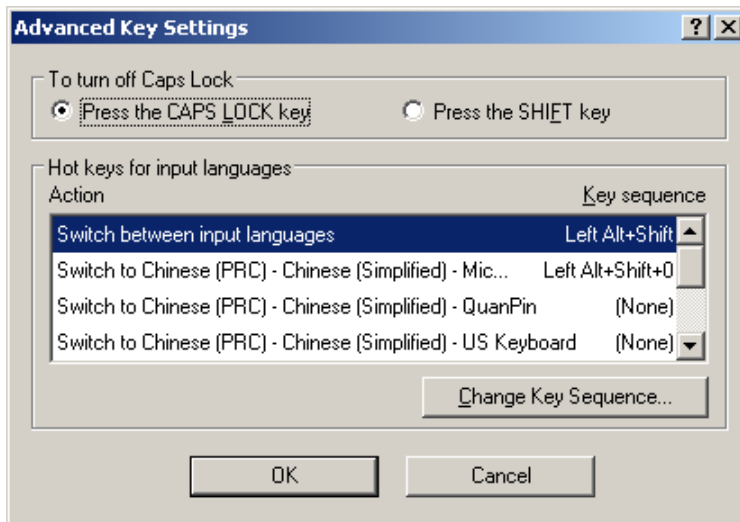
The **Add Input Language** dialog box appears, as shown below.



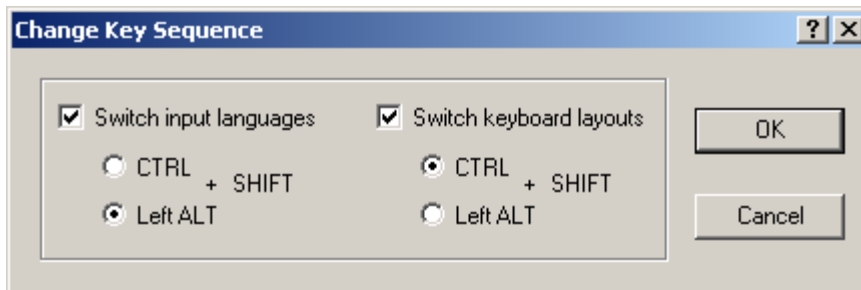
5. Select **Chinese (PRC)** from the **Input language** drop-down list.
6. Click the checkbox for **Keyboard Layout/IME**.

- Click the **Keyboard Layout/IME** drop-down list and scroll all the way down to the end. Select **中文 (简体) - 谷歌拼音输入法** from the list.
- Click **OK** to close the dialog.
- Click **Key Settings** to open the **Advanced Key Settings** dialog box, as shown below.



Verify that the default key sequence for switching between input languages is set to **Left Alt + Shift**.





- If this is not the case, click **Change Key Sequence**. Then reset the key sequence in the following dialog box.



- Click OKs to close all the open windows and dialog boxes.

If you have set up your computer correctly, **EN** will appear on your Taskbar. This indicates English typing. Press **Left Alt + Shift** to switch to Chinese typing. **CN** will appear on your Taskbar. If MS Pinyin IME icon  appears beside **CN**, click it to switch to Google Pinyin IME icon . Then you may start to enjoy Google Pinyin IME typing.

IV. Setting up Google Pinyin IME for Windows Vista

For Windows Vista, usually there is no need to set up the computer for Google Pinyin IME after the installation. Simply press **Left Alt + Shift** to switch to Chinese typing. **CN** will appear on your Taskbar. If MS Pinyin IME icon  appears beside **CN**, click it to switch to Google Pinyin IME icon . Then you may start to enjoy Google Pinyin IME typing.

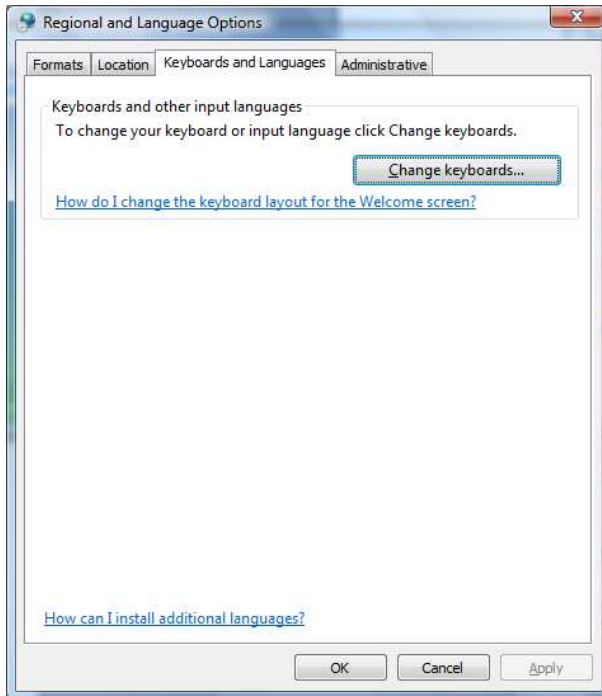
If it becomes necessary to set up your computer for Google Pinyin IME:

1. Log in as administrator.
2. Open the **Control Panel**, as shown below



3. Click **Change keyboards or other input methods** under **Regional and Language Options**.

The **Regional and Language Options** window opens, as shown below.



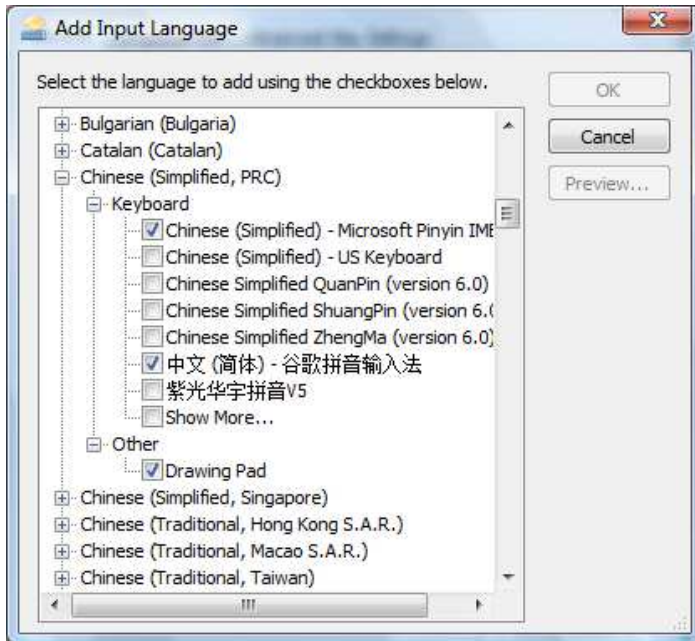
4. If the Chinese language files have not been installed, click **How can I install additional languages** and follow the instructions to install them.
5. Click **Change keyboards**.

The **Text Services and Input Languages** window opens, as shown below.



6. If 中文 (简体) - 谷歌拼音输入法 is not on the **Installed services** list, click **Add**.

The **Add Input Language** dialog box appears, as shown below.

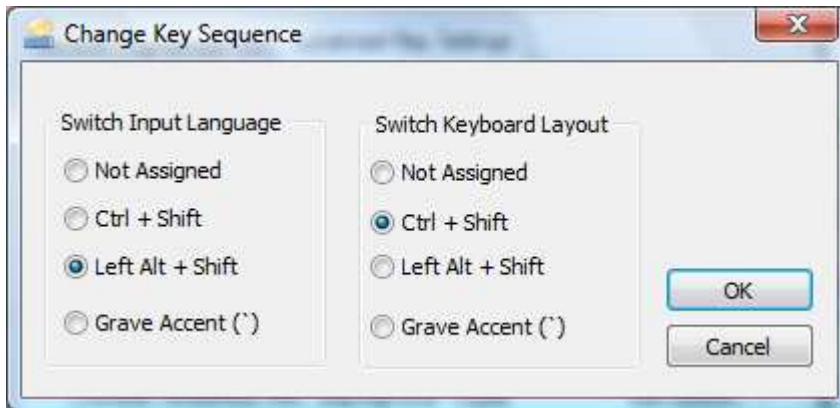


7. Click the check box for 中文 (简体) - 谷歌拼音输入法 and then click **OK** to return to the **Text Services and Input Languages** window.
8. Click the **Advanced Key Settings** tab, as shown below.



Verify that the default key sequence for switching between input languages is set to **Left Alt + Shift**.



9. If this is not the case, click **Change Key Sequence**. Then reset the key sequence in the following dialog box.



10. Click OKs to close all the open windows and dialog boxes.

If you have set up your computer correctly, **EN** will appear on your Taskbar. This indicates English typing. Press **Left Alt + Shift** to switch to Chinese typing. **CN** will appear on your Taskbar. If MS Pinyin IME icon  appears beside **CN**, click it to switch to Google Pinyin IME icon . Then you may start to enjoy Google Pinyin IME typing.