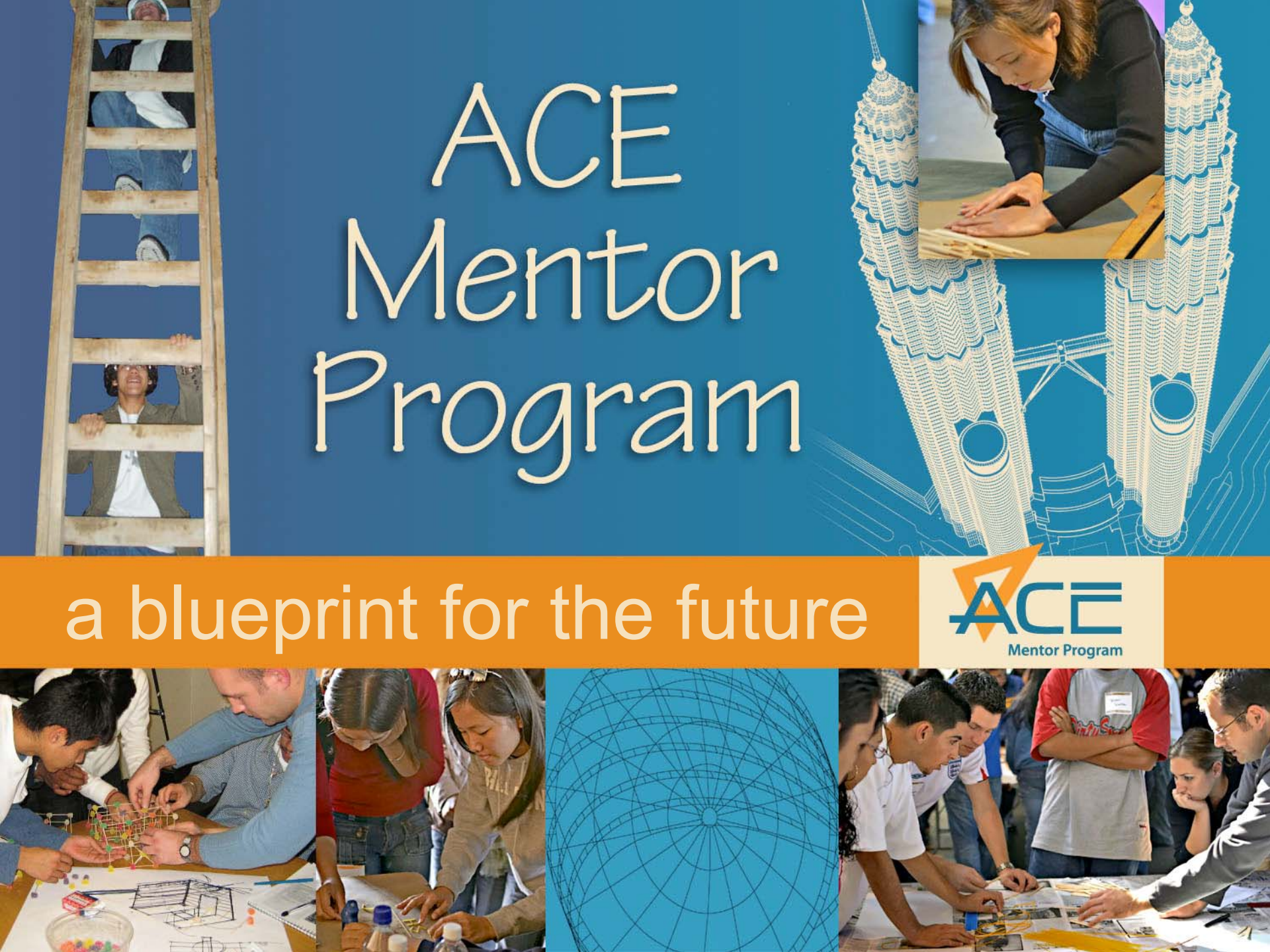


ACE Mentor Program

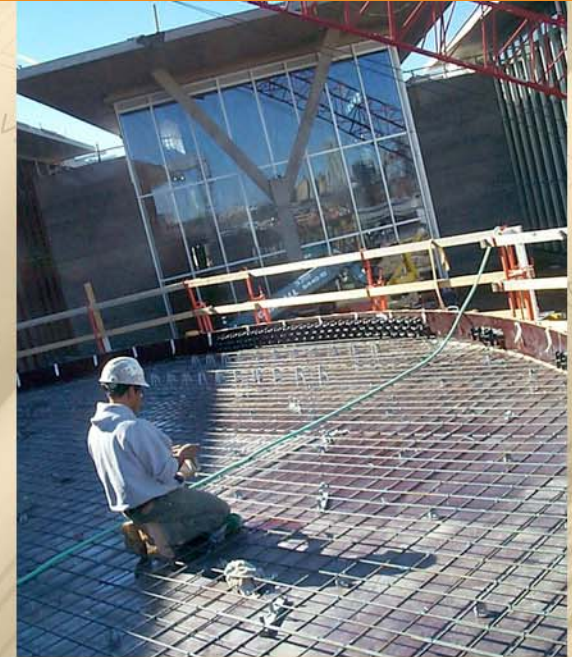
a blueprint for the future



The Construction Industry

career directions for students in architecture, construction and engineering

- ✔ Second largest employer in the country (healthcare)
- ✔ Employs more than 7 million
- ✔ Represents 10% of all businesses
- ✔ Produces more than 9% of the GNP
- ✔ Generates more than \$230 billion a year



The Crisis Ahead

career directions for students in architecture, construction and engineering

- ❑ Fifty percent of all buildings that will exist by the year 2030 haven't even been built yet
- ❑ For every five who leave the industry only one enters
- ❑ Workforce is aging



The Need

career directions for students in architecture, construction and engineering

Department of Labor

- ✔ Construction as one of six industries for growth
- ✔ More than one million job openings by 2010
- ✔ Prediction was before 2005 natural disasters!



Construction Users Roundtable

- ✔ Demand far exceeds supply

Effect on Consumer

career directions for students in architecture, construction and engineering

- ✔ Buildings may not be completed on schedule
- ✔ Costs will escalate
- ✔ Budgets will need rethinking
- ✔ Projects may go on hold



Question to answer

career directions for students in architecture, construction and engineering



Will there be enough architects, landscape architects, contractors, engineers to meet the demand?





“How It Works”

career directions for students in architecture, construction and engineering

Humble Beginnings

career directions for students in architecture, construction and engineering

1991 – New York City

- ✔ Vision of Charlie Thornton
- ✔ One team
- ✔ 15 kids
- ✔ Five mentors

1995

- ✔ Received tax exempt status
- ✔ Still New York based



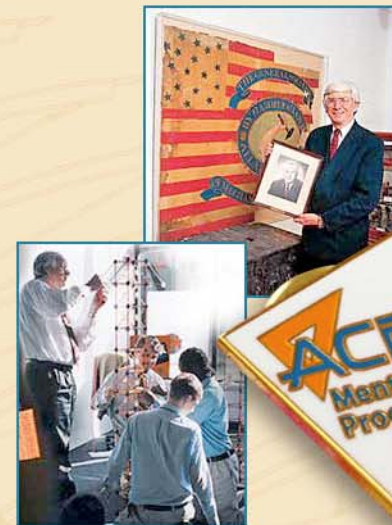
“Charlie”

career directions for students in architecture, construction and engineering



“With ACE, everybody wins.”

—*Charles H. Thornton, Ph.D. P.E.*





ACE Growth

career directions for students in architecture, construction and engineering



YEAR	CITIES	TEAMS	STUDENTS	MENTORS
1995 - 7	1	6	300	48
1998	2	12	320	110
1999	3	16	460	160
2000	9	30	810	260
2001	21	42	1,420	390
2002	36	57	1,980	460
2003	55	98	2,730	792
2004	64	103	2,939	806
2005	73	116	3,106	1,010
2006	77	142	5,467	1,780
2007	91	168	7,367	2,114



ACE 2006-2007 Growth

career directions for students in architecture, construction and engineering

Alabama

Birmingham
Auburn
Oxford
Mobile

Arizona

Tucson
Phoenix

California

Los Angeles
Oakland
Palm Springs
Pasadena
Rosemead
San Diego
San Francisco
San Jose
Santa Ana
Santa Monica
Sacramento
San Clemente
Irvine
Bakersfield
Contra Costa
San Luis Obispo
San Bernardino
Ventura
Sonoma

Colorado

Denver

Connecticut

Bridgeport/Stratford
Hartford
New Haven
Stamford
Waterbury

District of Columbia

Washington, DC
Montgomery County, MD,
Fairfax County, VA
Prince George's County, MD

Florida

Jacksonville
Miami
Tampa
Orlando
West Palm Beach
Ft. Lauderdale
St. Petersburg
Gainesville
Ft. Myers
Naples
Tallahassee

Georgia

Atlanta
Albany

Hawaii

Honolulu

Idaho

Boise

Illinois

Chicago

Indiana

Indianapolis
Terre Haute

Iowa

Des Moines
Davenport
Cedar Rapids

Kentucky

Louisville
Lexington
Paducah

Louisiana

Baton Rouge
New Orleans

Maryland

Baltimore
Easton
Frederick
St. Michaels
Annapolis

Massachusetts

Boston
Worcester

Michigan

Detroit
Lansing
Grand Rapids

Minnesota

St. Paul
Minneapolis

Missouri

St. Louis
Kansas City

Nebraska

Omaha

Nevada

Las Vegas
Reno

New Hampshire

Manchester

New Jersey

Camden
East Orange
Piscataway
Newark
Trenton
Vineland
Jersey City

New Mexico

Albuquerque

New York

Albany
Buffalo
Garden City
New Hyde Park
New York City
Yonkers
Rochester
Ithaca
Syracuse

North Carolina

Charlotte
Raleigh
Monroe
Durham

Ohio

Cincinnati
Toledo
Cleveland
Columbus
Dayton

Oklahoma

Tulsa
Okmulgee
Oklahoma City

Oregon

Portland

Pennsylvania

Philadelphia
Pittsburgh
York

Rhode Island

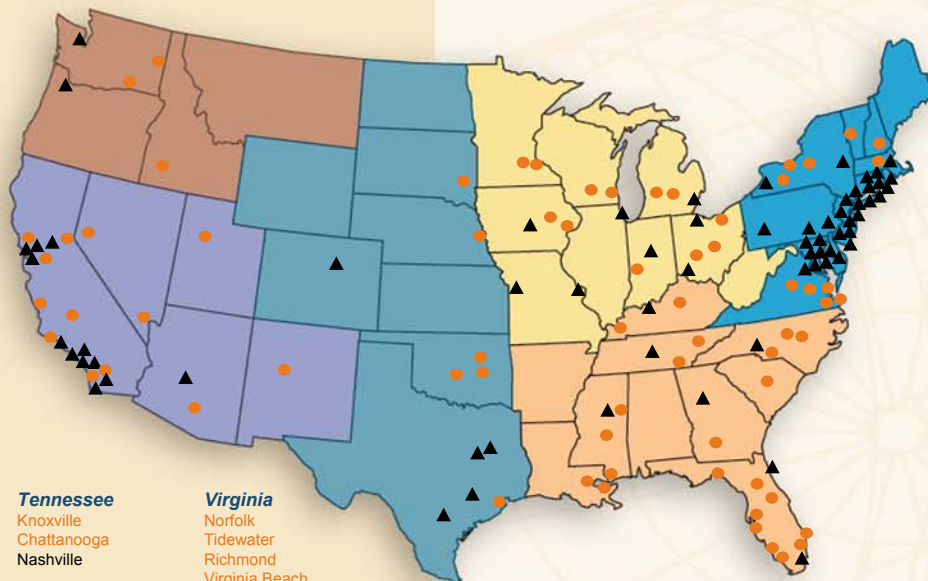
Providence

South Carolina

Columbia

South Dakota

Sioux Falls



Tennessee

Knoxville
Chattanooga
Nashville

Texas

Austin
Dallas
Ft. Worth
Houston
San Antonio

Utah

Salt Lake City

Vermont

Burlington

Virginia

Norfolk
Tidewater
Richmond
Virginia Beach
Charlottesville

Washington

Seattle
Spokane
Tri-Cities

Wisconsin

Milwaukee
Madison

International

Puerto Rico
Trinidad and Tobago
London
Toronto
Montreal

ACE Mentor Program Affiliates



Certificate of Operation



Strong Interest



ACE's Potential

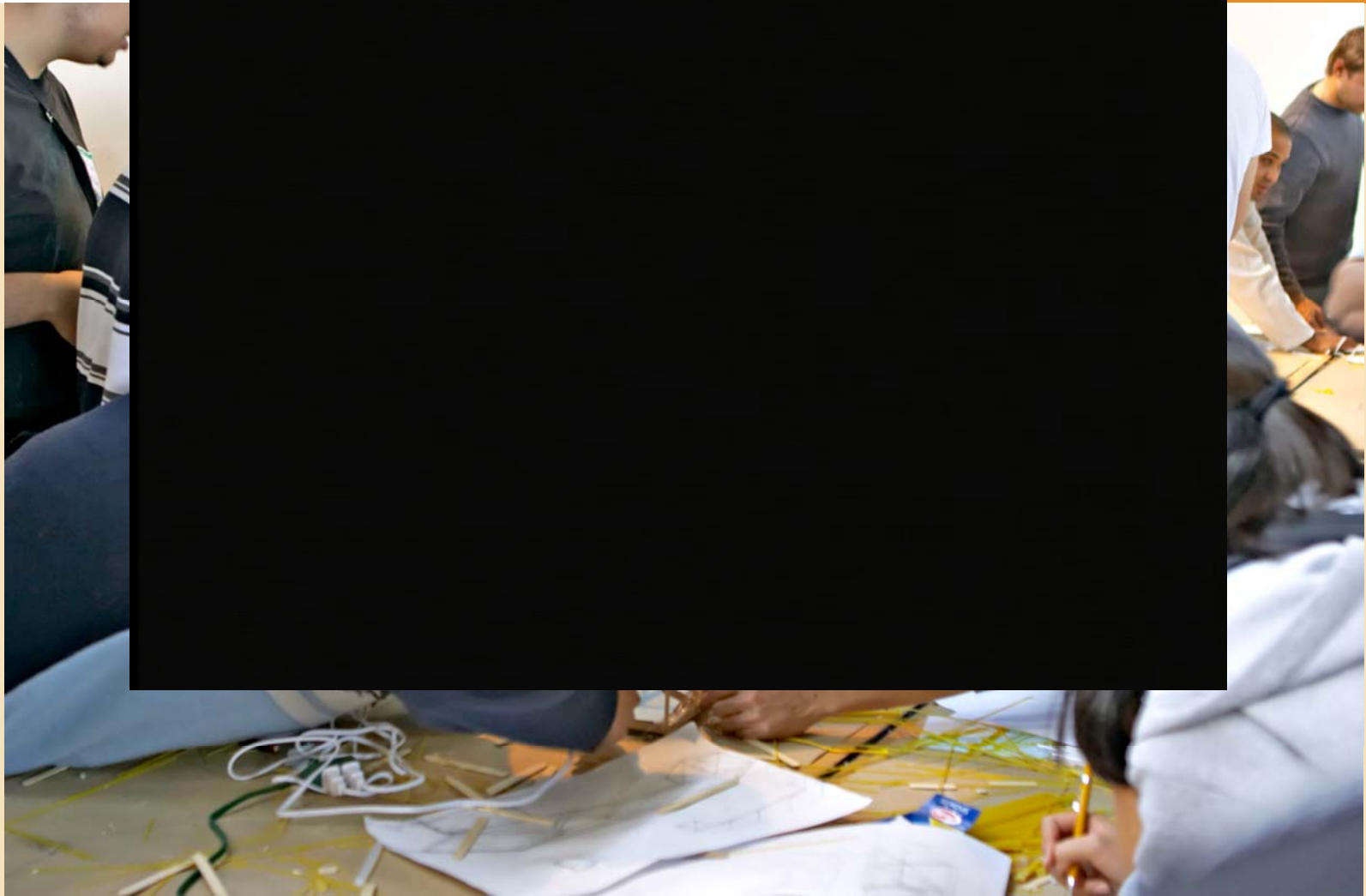
career directions for students in architecture, construction and engineering

- ✔ By 2008 - 46 states
- ✔ Potential of 73 new sites
- ✔ 10,000 students in 2007-08
- ✔ 2,500 mentoring firms
- ✔ 3,100 mentors



The Program: How it Works

and engineering





Mission

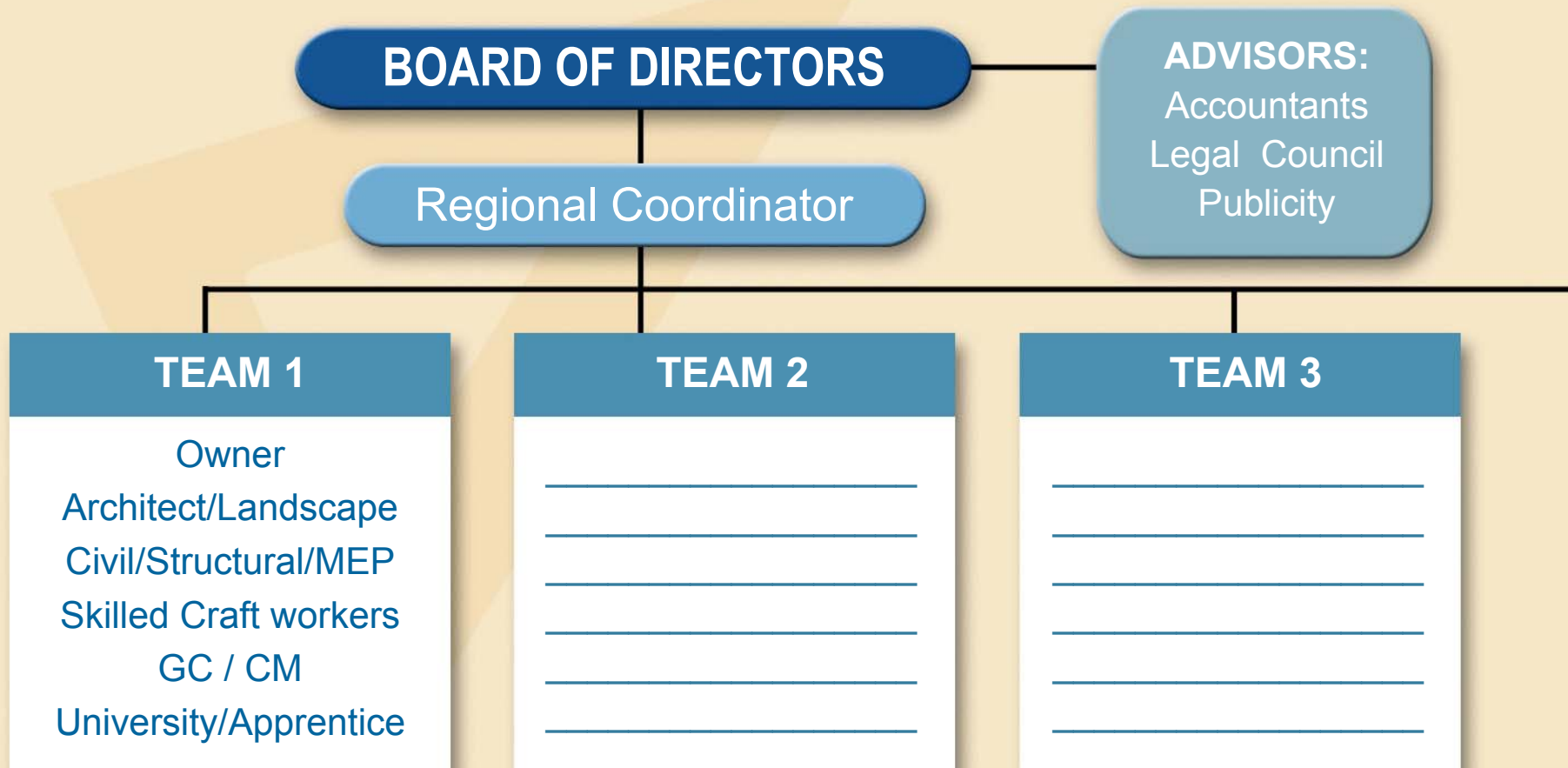
career directions for students in architecture, construction and engineering



To increase the awareness of high school students to career opportunities in architecture, construction and engineering through mentoring

Typical Affiliate Organization

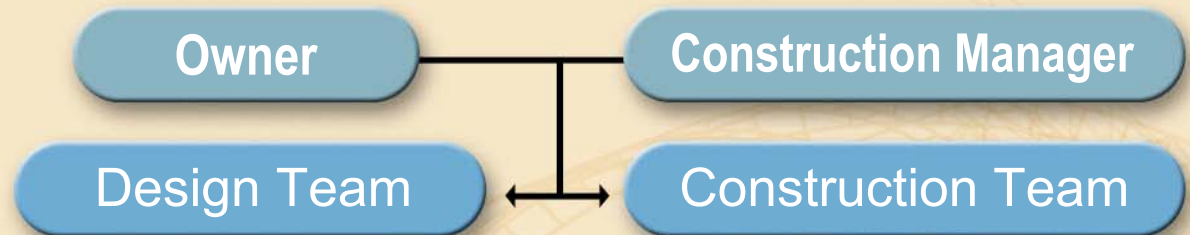
career directions for students in architecture, construction and engineering



Components

career directions for students in architecture, construction and engineering

Introductory Sessions



Registration



ARCHITECT

Civil Engineer
Structural Engineer
Mechanical Engineer
Electrical Engineer
Plumbing Engineer
Interior Designer
Specialty Consultants

GENERAL CONTRACTOR

Equipment Operator
Iron Worker
Concrete Worker
Mason
Sheet Metal Worker
Electrician
Plumber
Carpenters, Painters
Specialty Trades



Field Trips

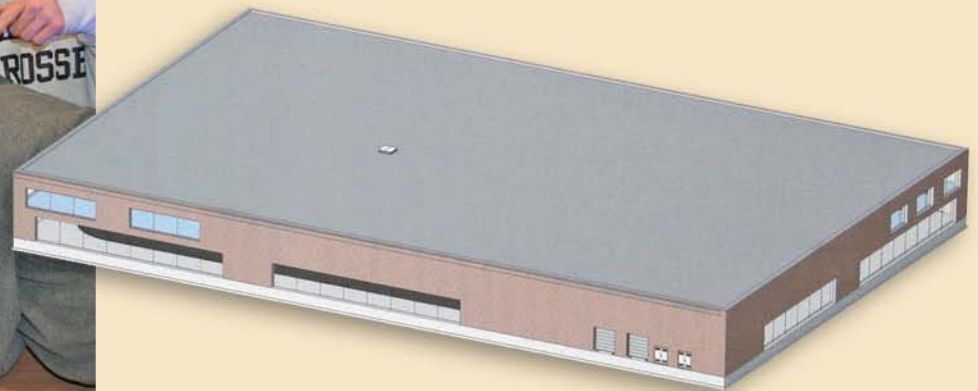
career directions for students in architecture, construction and engineering





The Project

career directions for students in architecture, construction and engineering





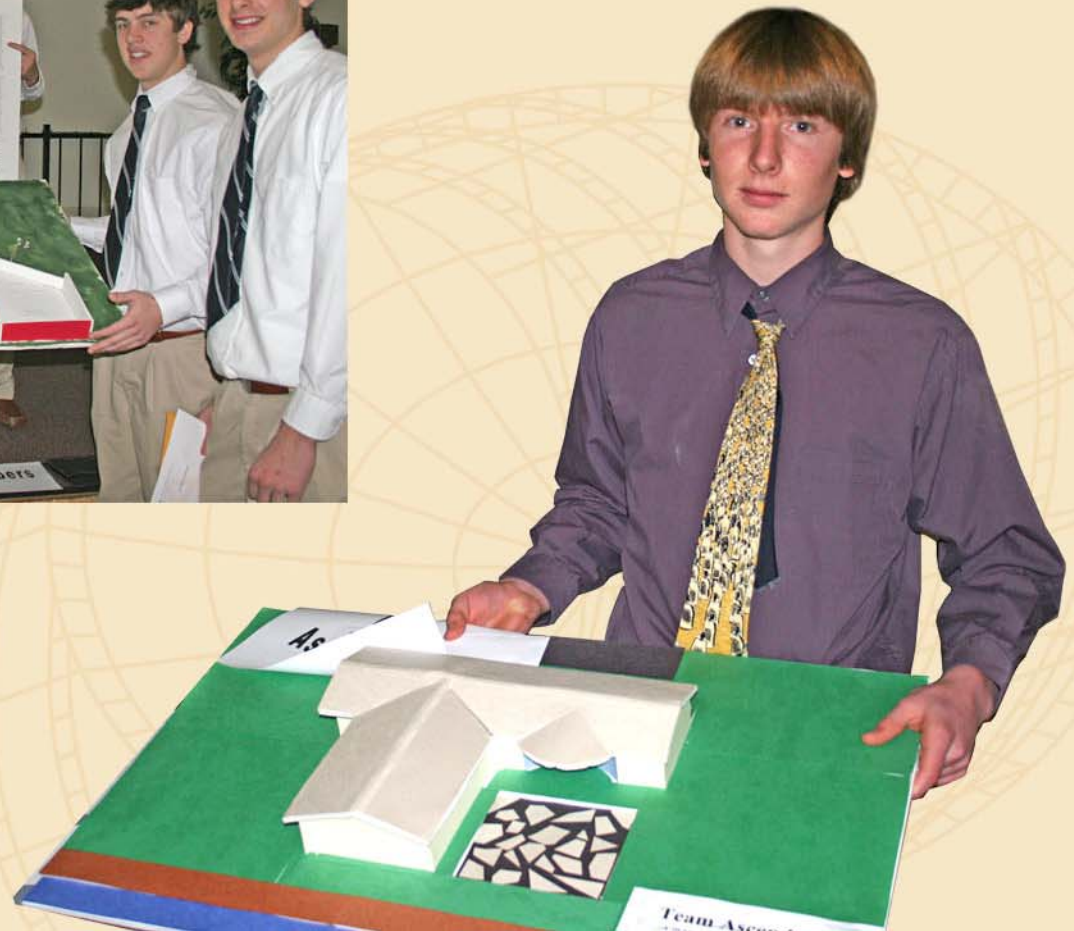
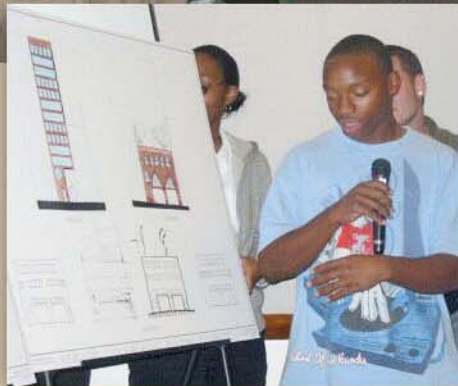
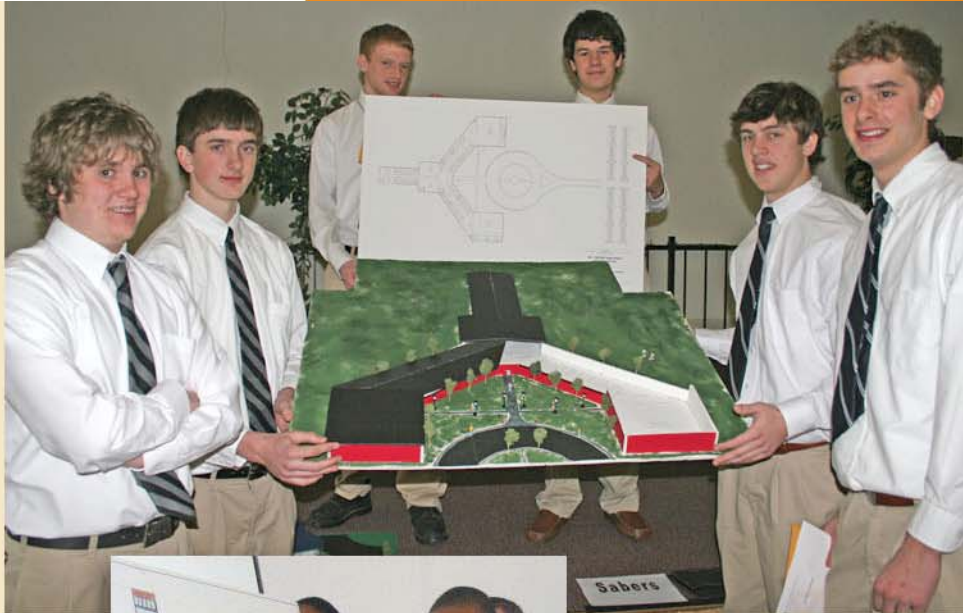
The Project

career directions for students in architecture, construction and engineering



The Presentation

career directions for students in architecture, construction and engineering





The Presentation

career directions for students in architecture, construction and engineering

Second Floor

Dining Area
Family Environment





The Reward

career directions for students in architecture, construction and engineering





Scholarships

career directions for students in architecture, construction and engineering



The Mentors

career directions for students in architecture, construction and engineering





The Mentors

career directions for students in architecture, construction and engineering





Who We Are

career directions for students in architecture, construction and engineering



men·tor [men-tawr, -ter] *noun*
a wise and trusted counselor or teacher.





About Mentors

career directions for students in architecture, construction and engineering

- ✔ Dedicated professionals passionate about what they do!
- ✔ Common goal of introducing career opportunities to high school students
- ✔ Work on biggest projects in their communities
- ✔ All volunteer





Mentoring Firms

career directions for students in architecture, construction and engineering

- ▽ All disciplines
- ▽ Top regional firms
- ▽ Top national firms
- ▽ Local firms





The Students

career directions for students in architecture, construction and engineering





The Students

career directions for students in architecture, construction and engineering





ACE Students

career directions for students in architecture, construction and engineering

- ▽ 82% minorities
- ▽ 50% women
- ▽ 92% go on to skilled training or a 2 – 4 year college program





ACE Students

career directions for students in architecture, construction and engineering

- ✔ Bright
- ✔ Motivated
- ✔ Public/Private Schools
- ✔ Freshmen through Seniors



What's in it for the Kids?

career directions for students in architecture, construction and engineering

- ✔ Career guidance
- ✔ Challenges
- ✔ Encouragement
- ✔ Enhanced skills
- ✔ Connections to employers
- ✔ Facilitates transition to workplace
- ✔ Summer jobs
- ✔ Scholarships



What's in it for You?

career directions for students in architecture, construction and engineering

- ▽ Feed the Pipeline!!!
- ▽ Opportunity to “give back”
- ▽ Encourages contractors to get involved
- ▽ Connection to motivated talent
- ▽ Leadership skills for mentors



“It’s All About the Students”

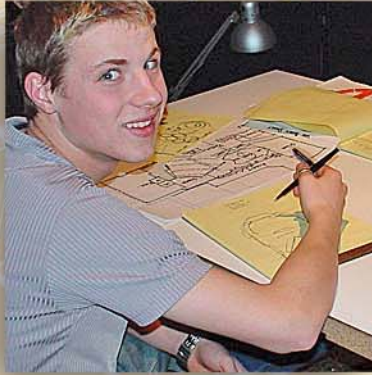
and engineering



The Real Reason: It's All About the Kids!

career directions for students in architecture, construction and engineering





ACE

Mentor Program

career directions for students in architecture, construction and engineering

