

SHELYAK III MICROMETER SETTINGS

NEW Ne-Ar LAMP INSTALLED MARCH 19, 2026

P. Hartigan Rice University

NOTES:

Hg lamp and green laser (a 5320 A blend) are not imaged here.

This lamp has some He in it, weaker Ne and stronger Ar relative to the original lamp

HIGH RESOLUTION GRATING

2400 lines/mm R=17000

Red Limit: 7250 A

Blue end goes out of focus shortward of ~ 4400 A

System throughput drops sharply shortward of ~ 4100 A

Additional potential blue lamp lines

Hg: 4046.565, 4077.837, 4358.335, 5460.750, 5769.610, 5790.670

He: 3888.648, 4026.191

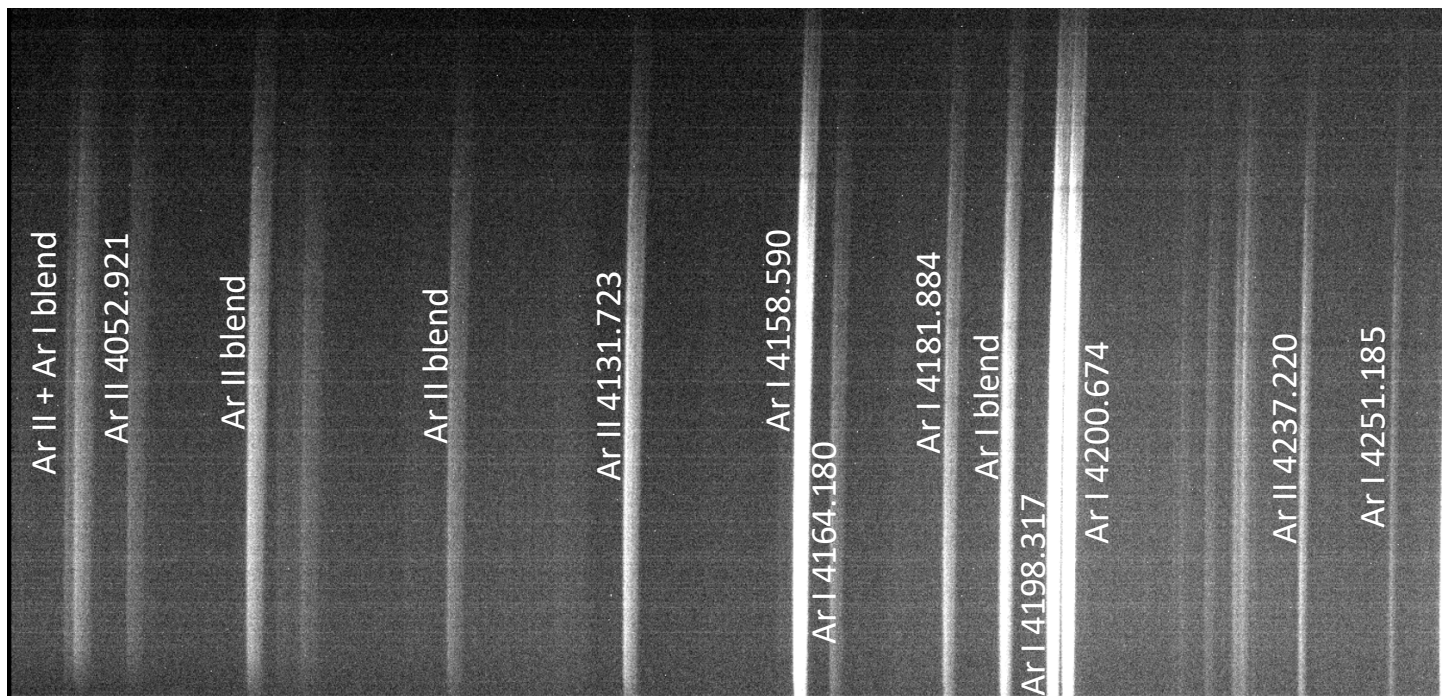
Ar: 3948.979, 4044.418

LOW RESOLUTION GRATING

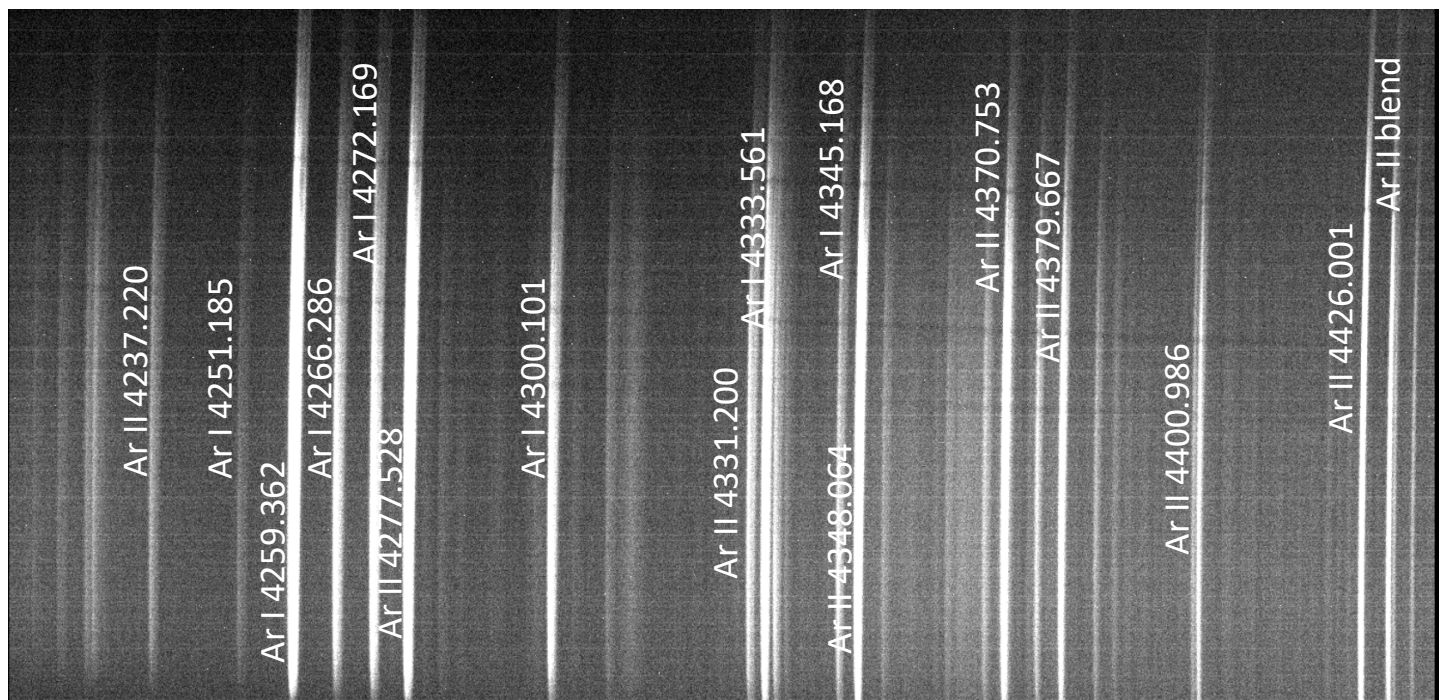
300 lines/mm R=2000

Micrometer setting = 303 to center first order

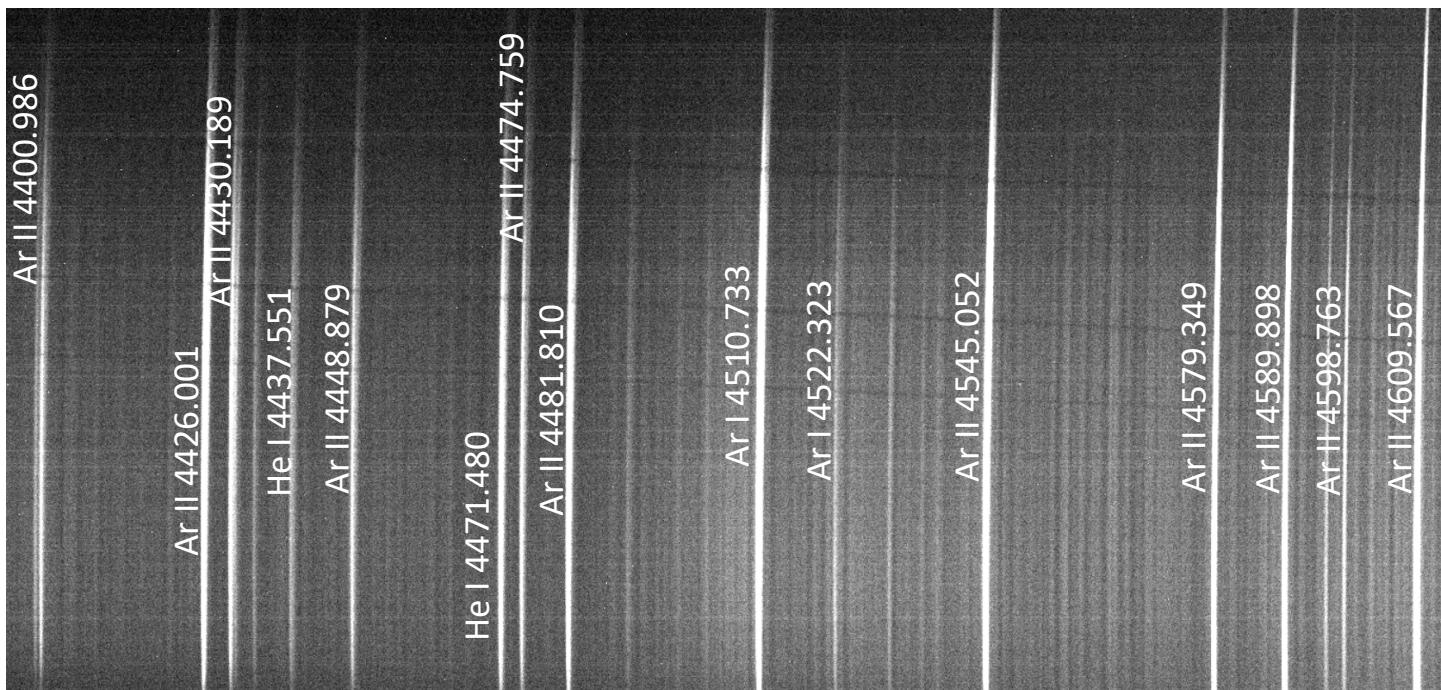
HIGH RESOLUTION WAVELENGTH SETTINGS



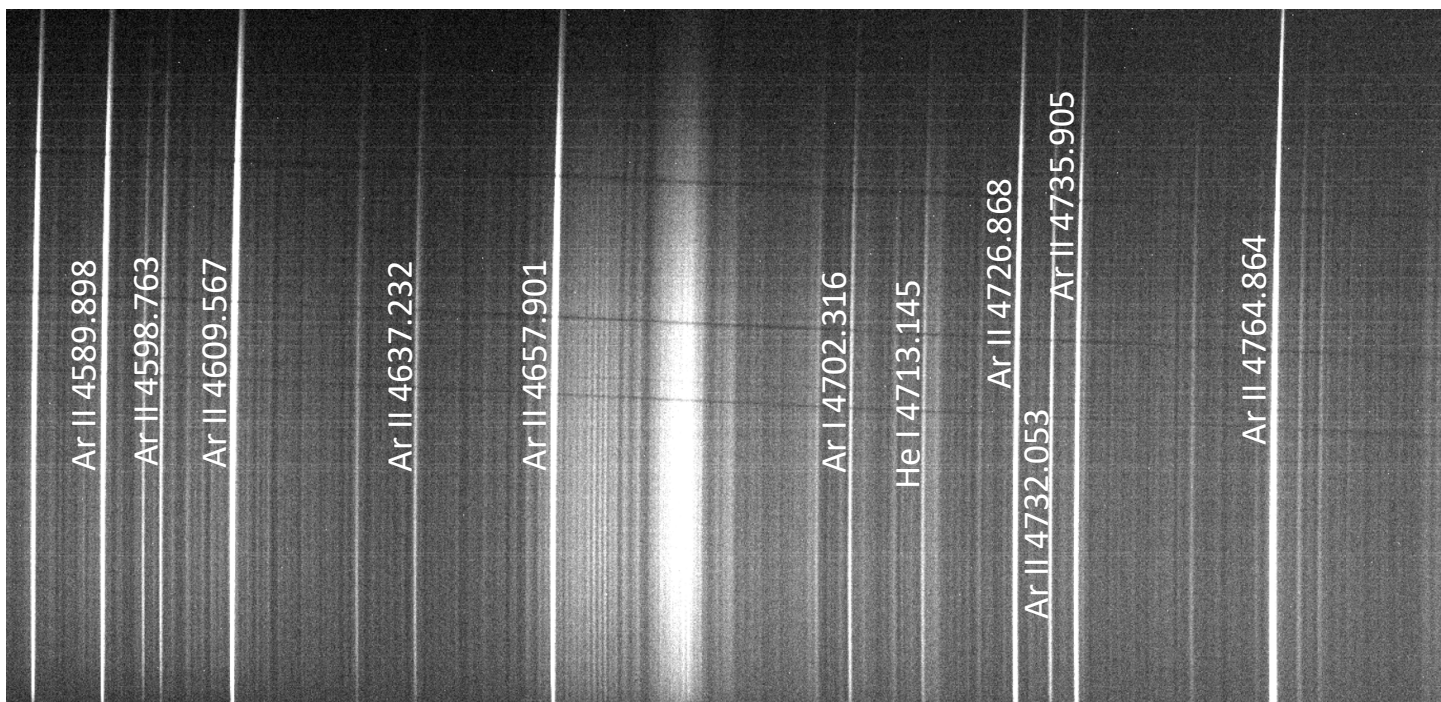
Micrometer = 1160



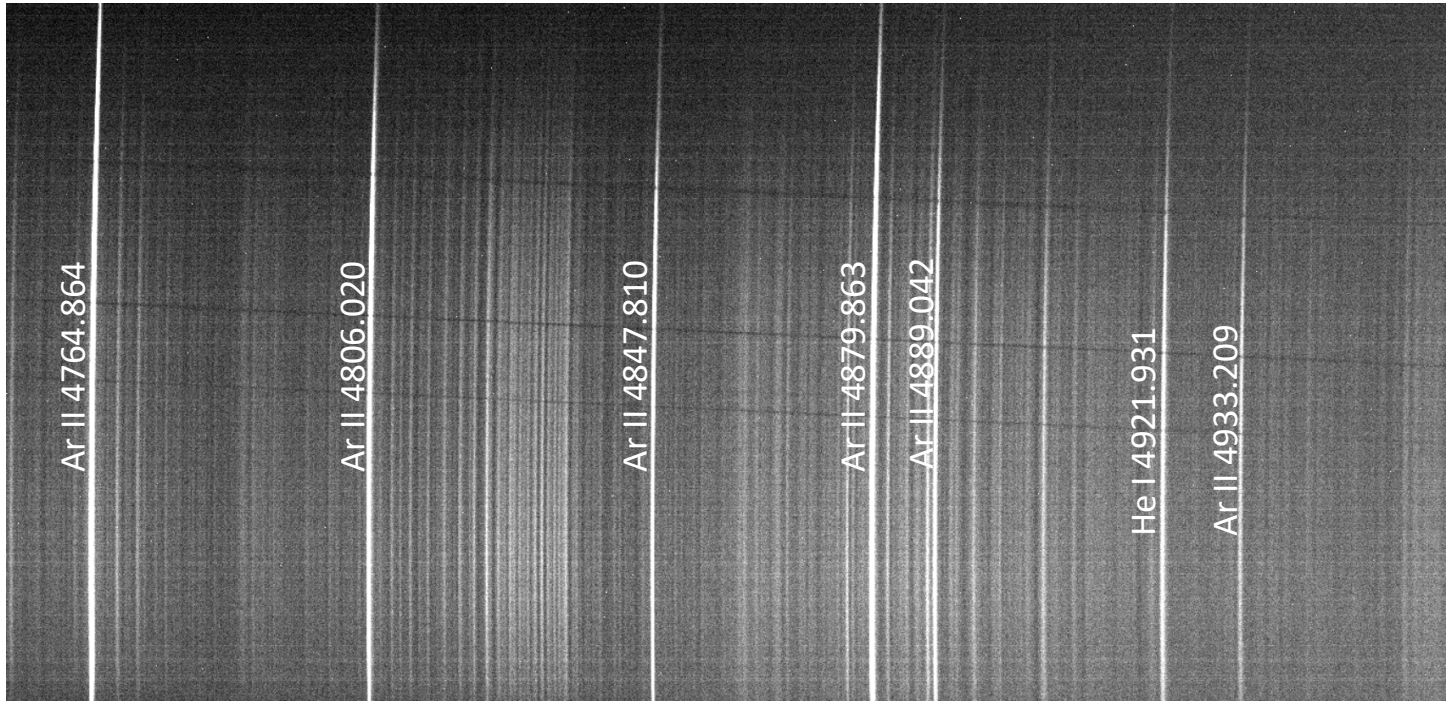
Micrometer = 1210



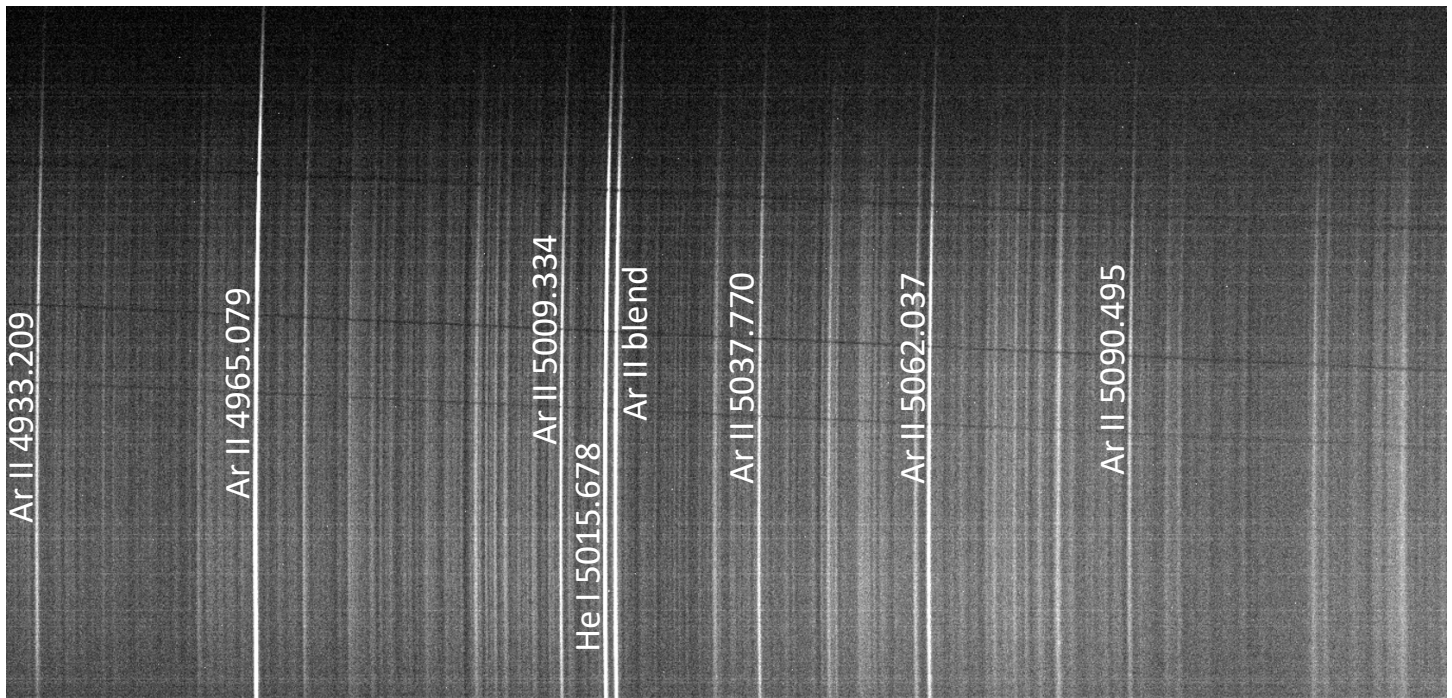
Micrometer = 1260



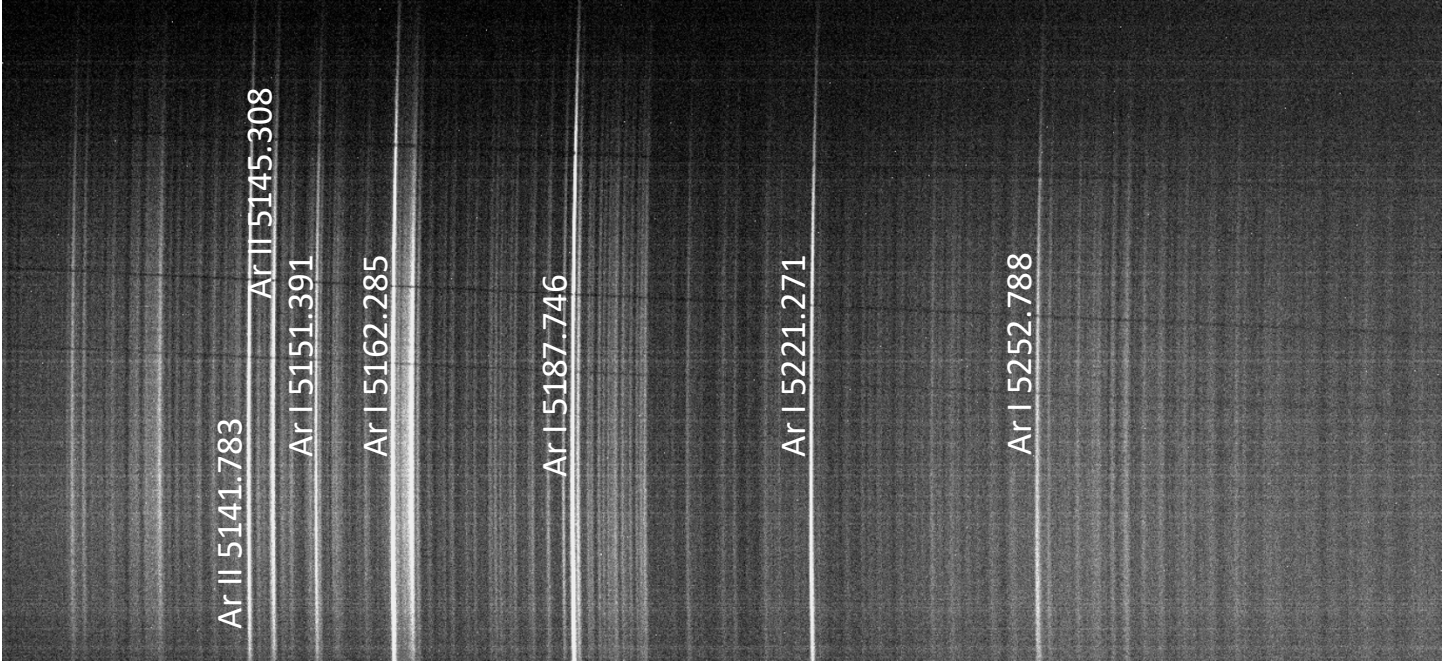
Micrometer = 1310



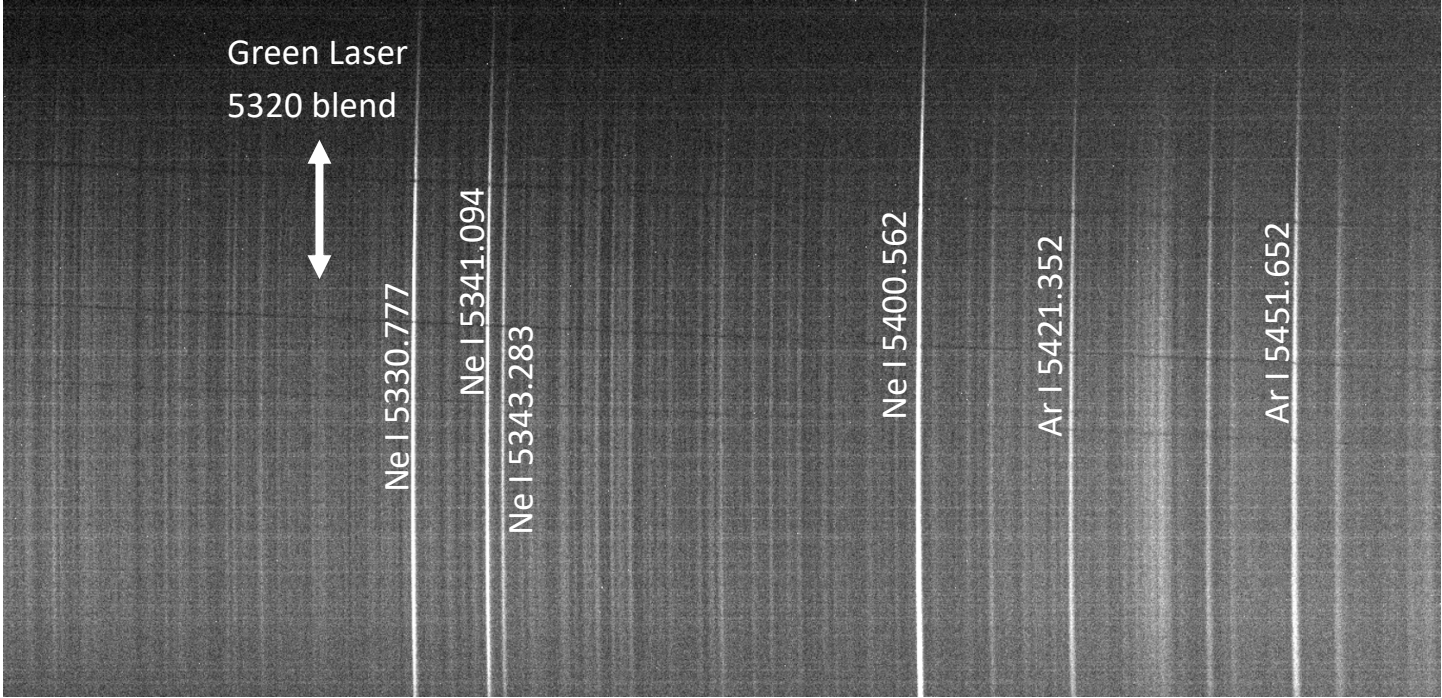
Micrometer = 1360



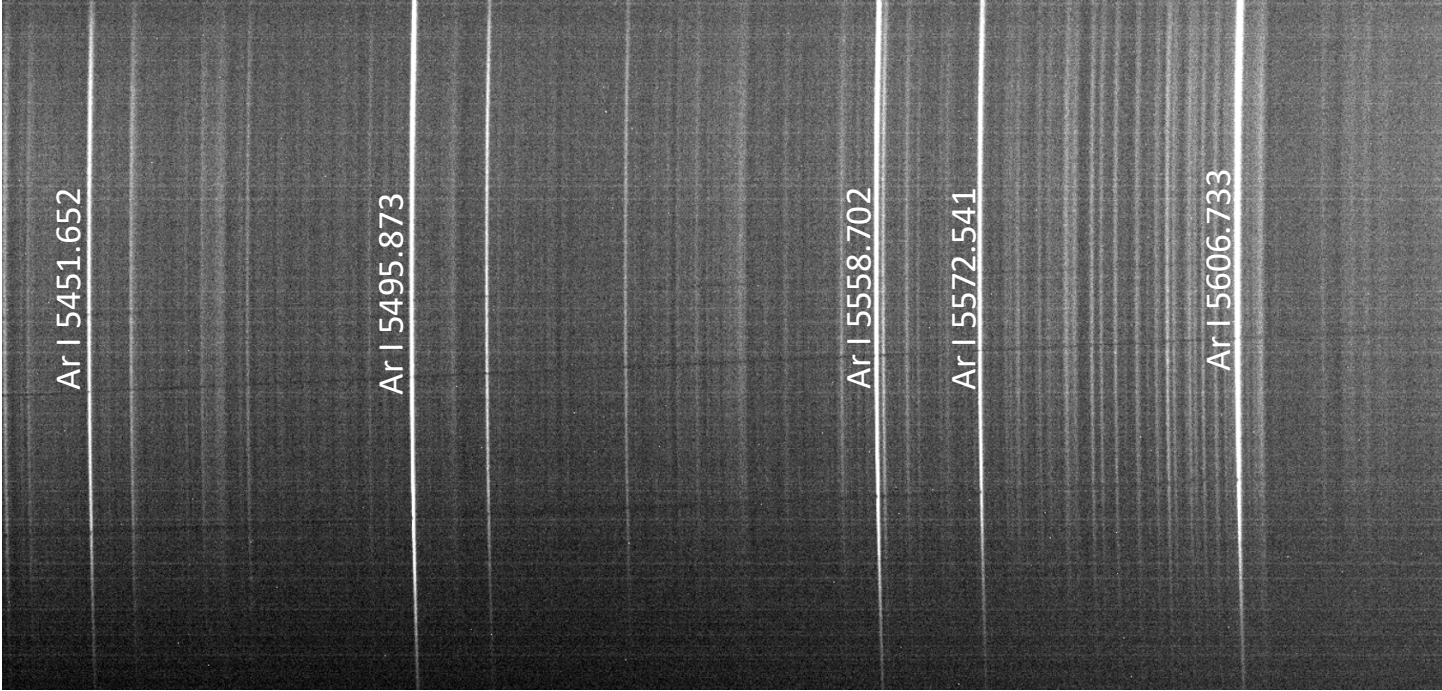
Micrometer = 1410



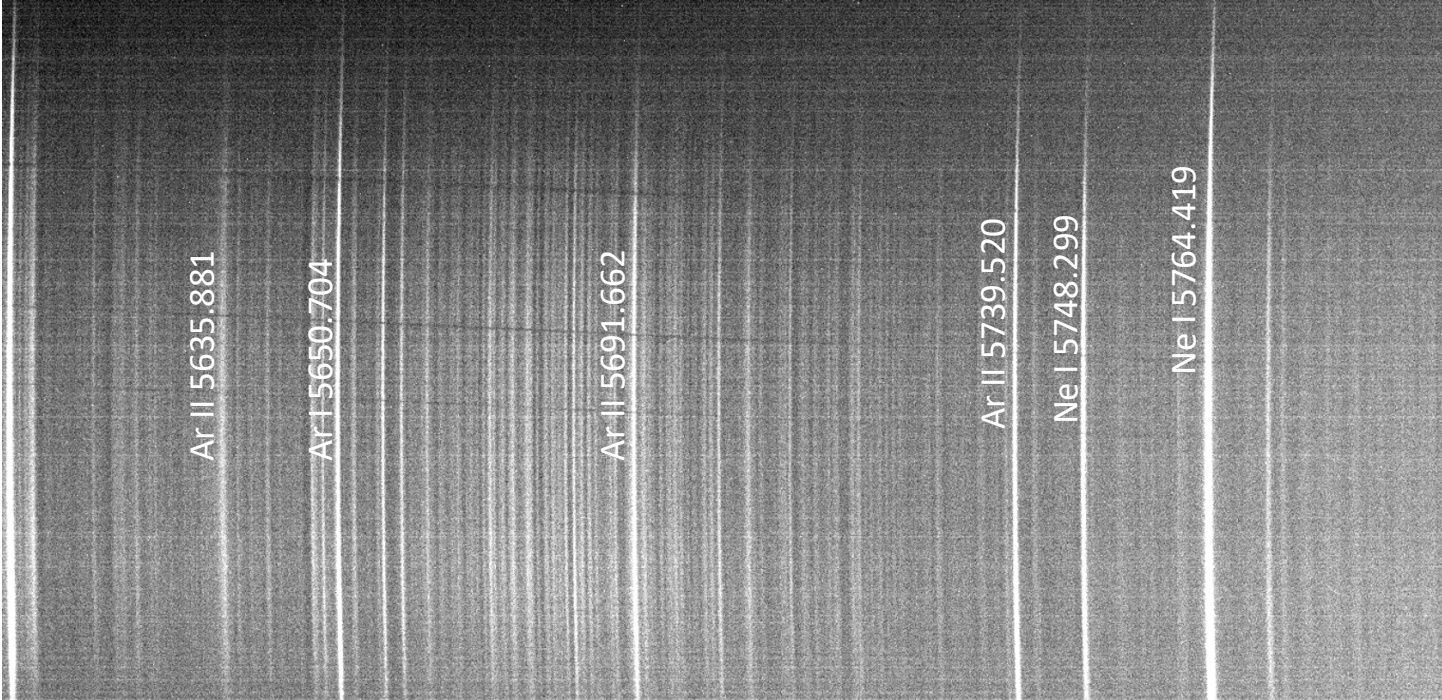
Micrometer = 1460



Micrometer = 1510



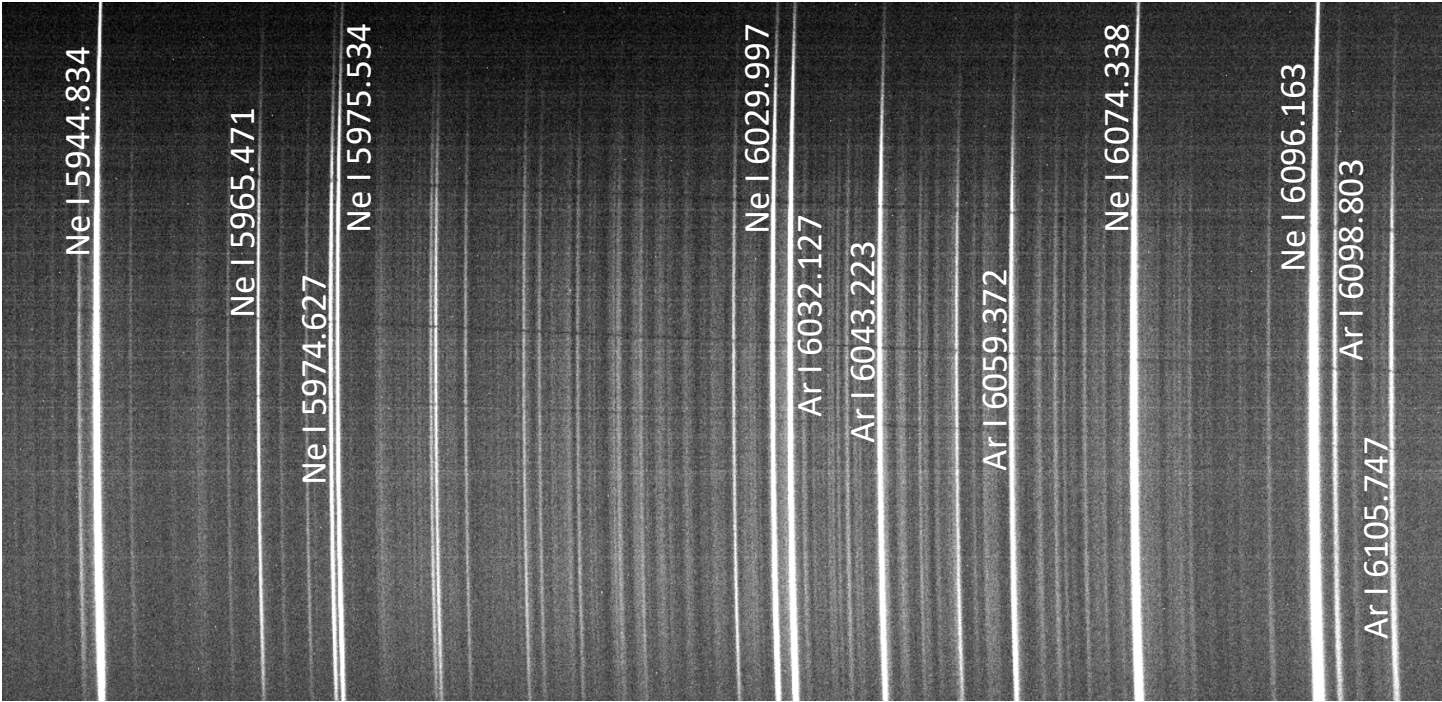
Micrometer = 1560



Micrometer = 1610



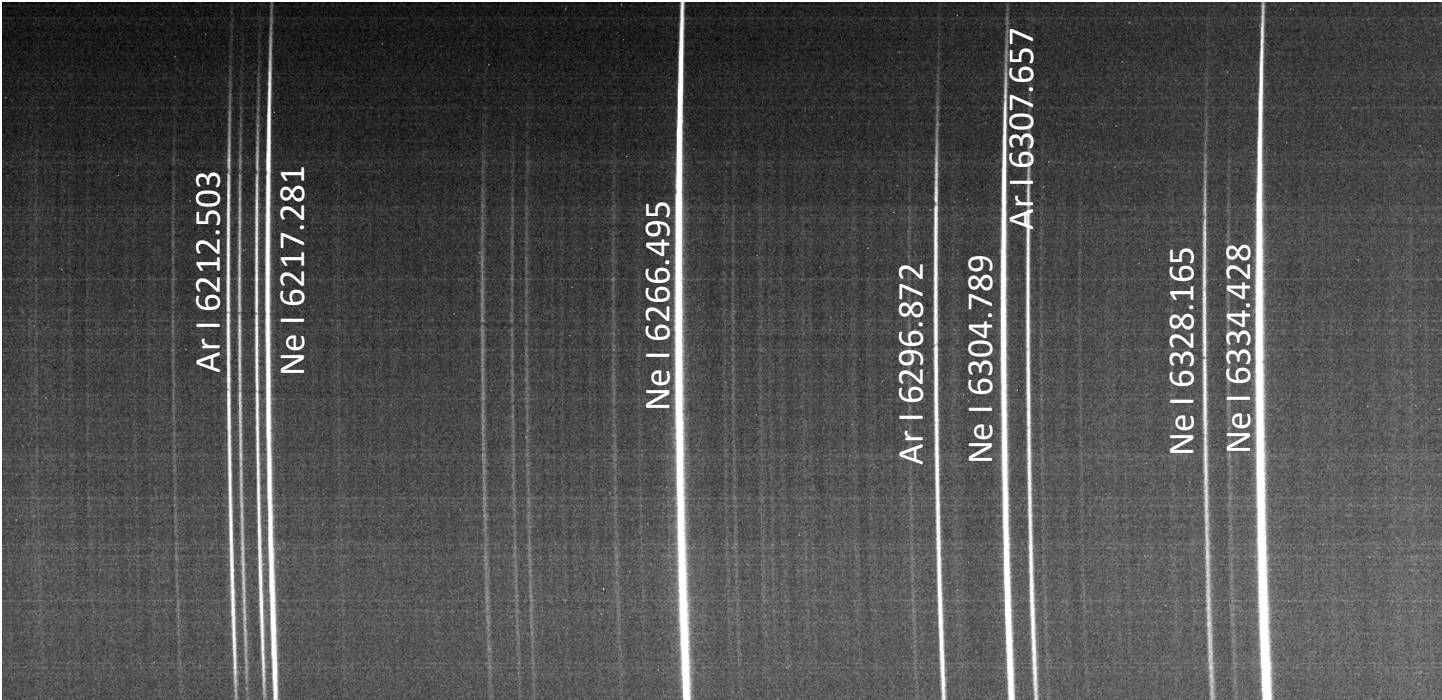
Micrometer = 1660



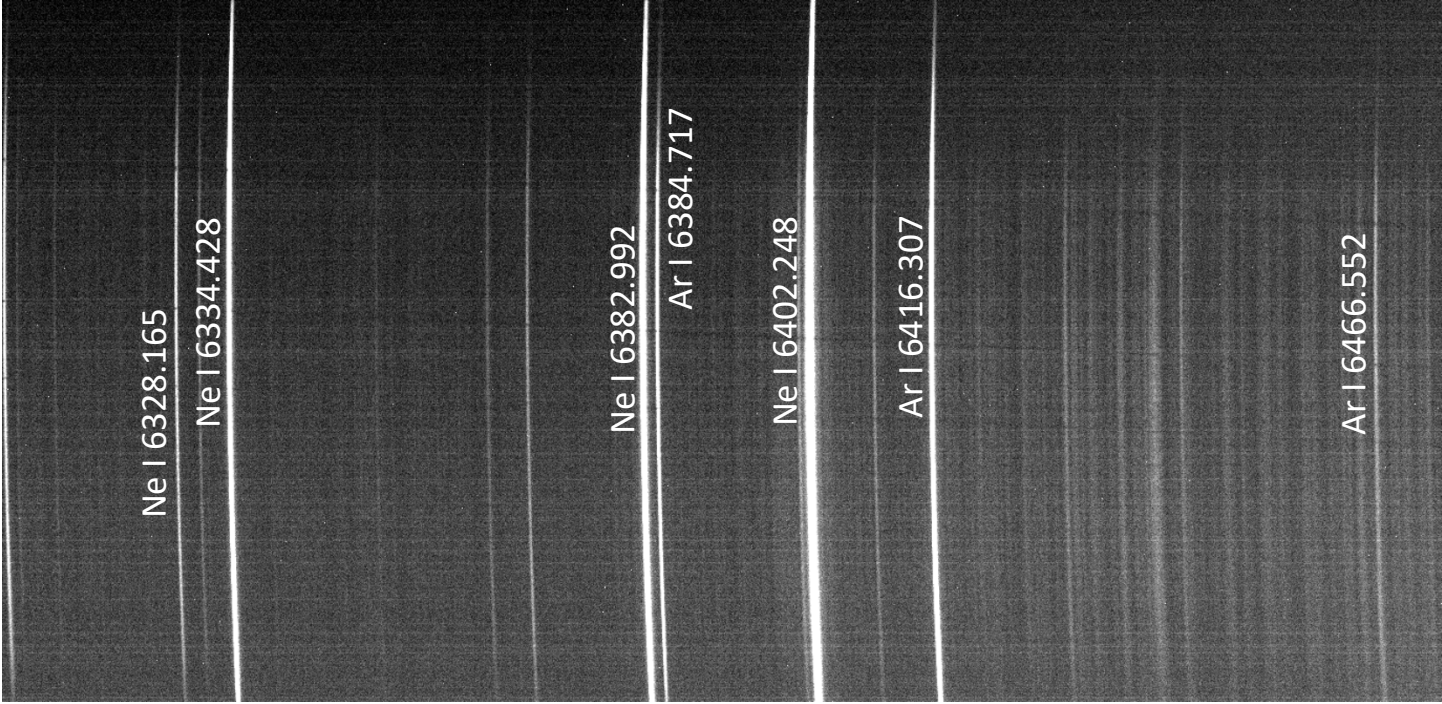
Micrometer = 1710



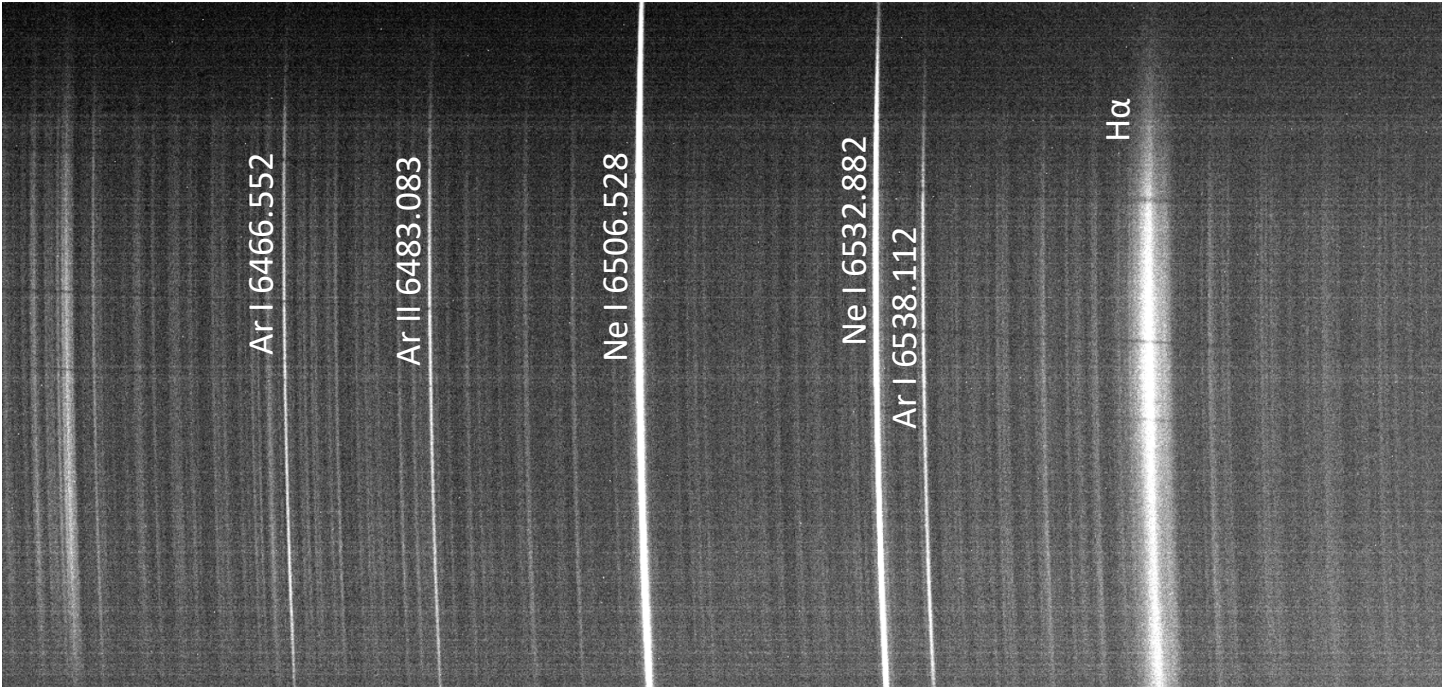
Micrometer = 1750



Micrometer = 1790



Micrometer = 1830



Micrometer = 1870



Micrometer = 1910



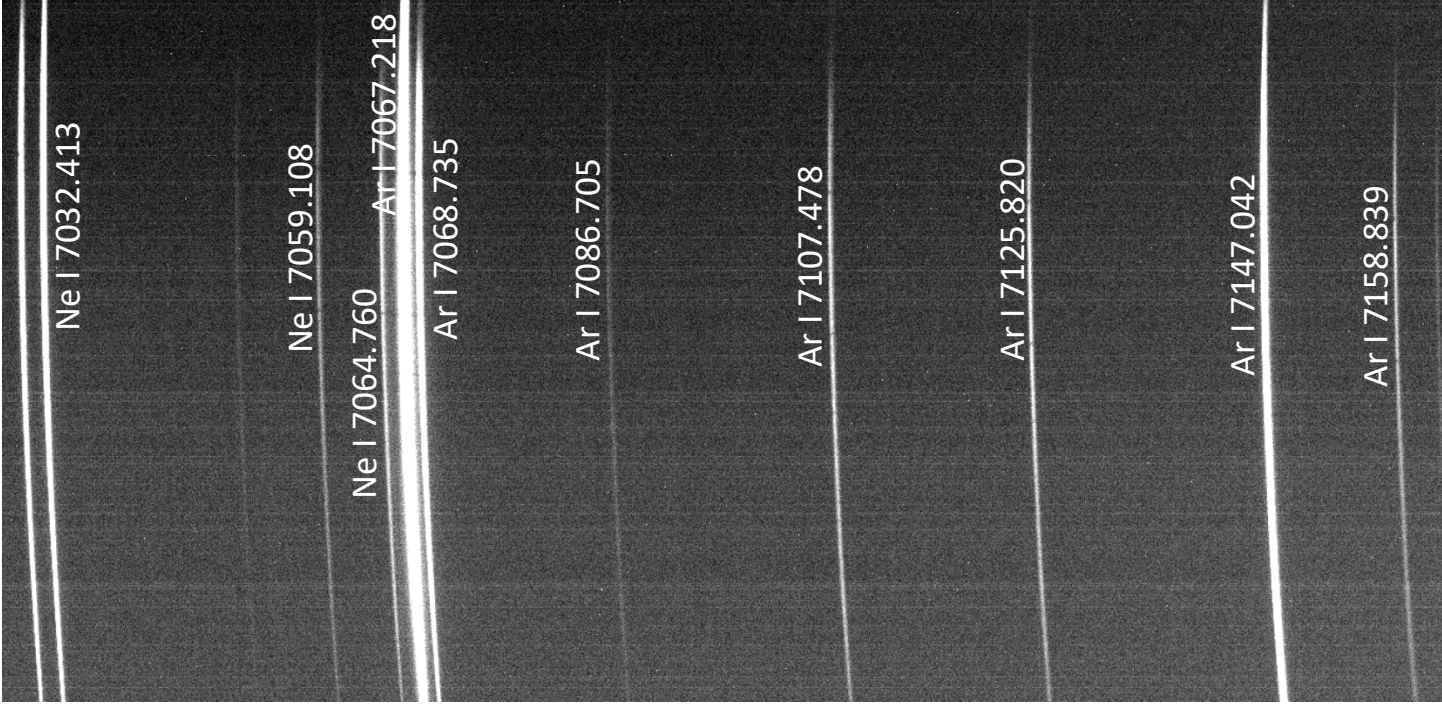
Micrometer = 1950



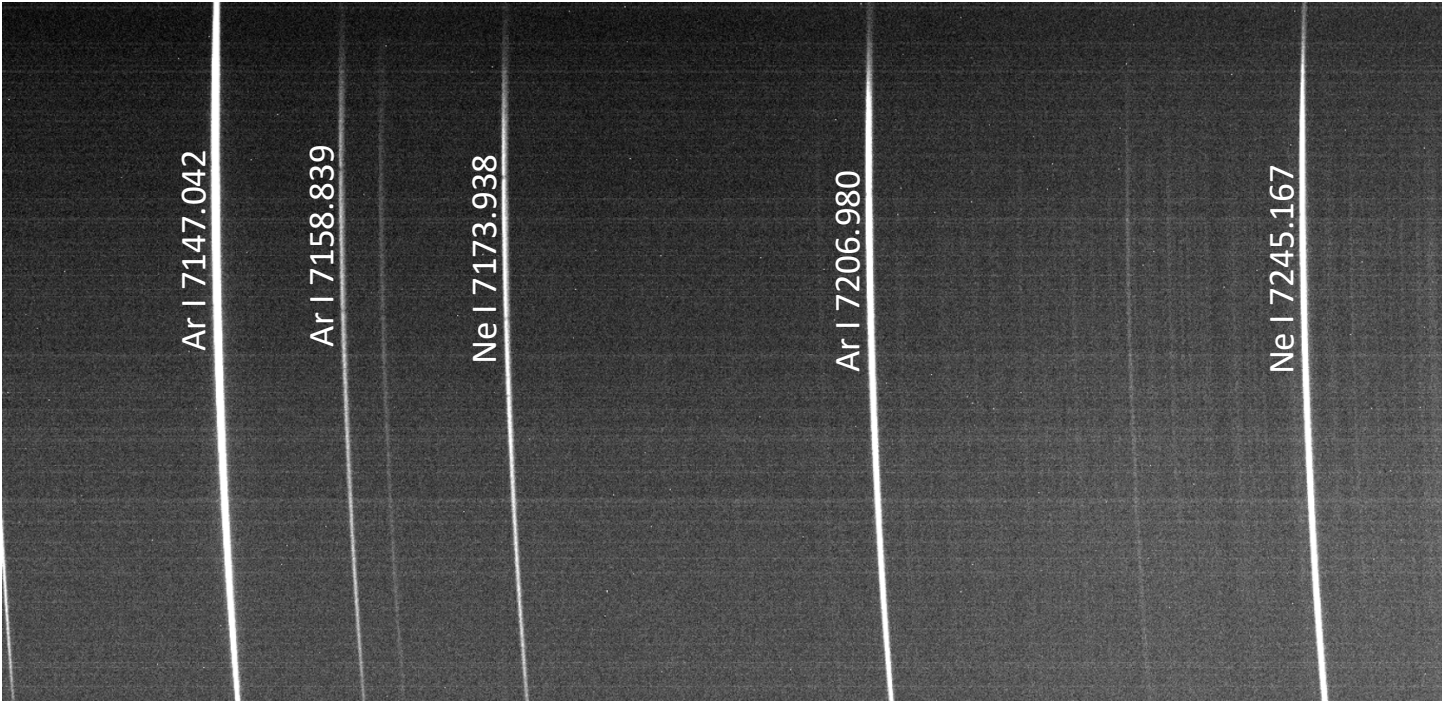
Micrometer = 1990



Micrometer = 2030



Micrometer = 2070



Micrometer = 2100 (end of travel)